

TM 9-1005-212-25

DEPARTMENT OF THE ARMY TECHNICAL MANUAL

ORGANIZATIONAL, DS, GS AND DEPOT MAINTENANCE
MANUAL INCLUDING REPAIR PARTS AND
SPECIAL TOOLS LISTS

MACHINE GUN, CALIBER .30: BROWNING, M1919A4,
FLEXIBLE W/E (1005-672-1643)

MACHINE GUN, CALIBER .30: BROWNING,
M1919A6 W/E (1005-611-6005)

MACHINE GUN, CALIBER .30: M37
(1005-716-2946)

MOUNT, TRIPOD, MACHINE GUN: CALIBER .30, M2, W/E
(1005-322-9718)



HEADQUARTERS, DEPARTMENT OF THE ARMY

JUNE 1969

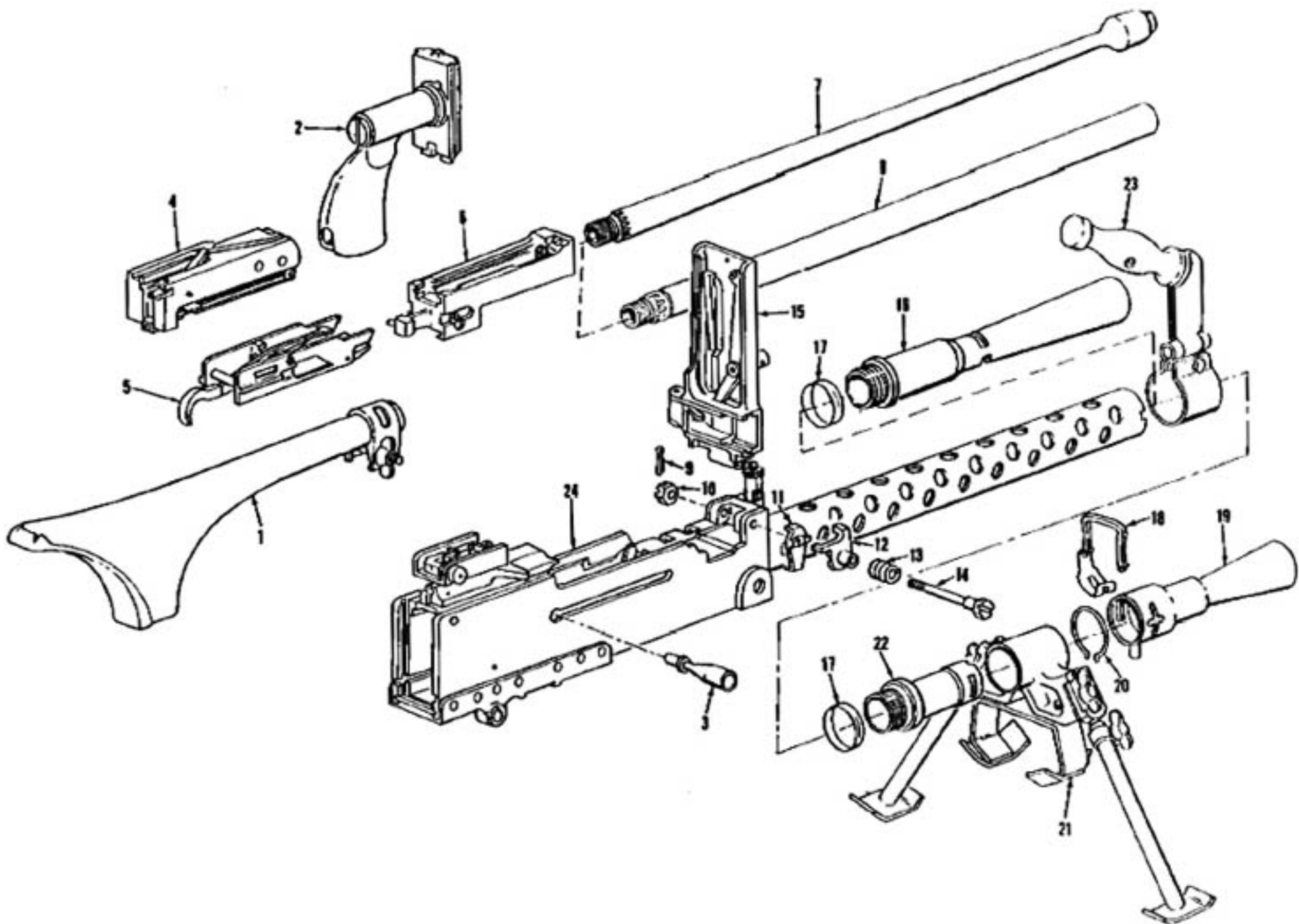


Figure B-1. Caliber .30 Machine Guns, M1919A4 and M1919A6—major groups and assemblies—partial exploded view.

SHOULDER GUN STOCK GROUP:

PLATE ASSEMBLY, BACK:

HANDLE, BOLT:

BOLT GROUP:

LOCK FRAME GROUP:

BARREL EXTENSION GROUP:

BARREL ASSEMBLY:

BARREL ASSEMBLY:

PIN, COTTER: S, PHOS-CTD, 1/16 DIA, 3/4 LG

NUT, CASTELLATED, HEXAGON: S, PHOS-CTD, 10

1/4-28UNF-2B, 7/16 W, 9/32 O/A H

PLATE, MOVEABLE: COVER CATCH

PLATE: FIXED, COVER CATCH

- | | | |
|----|--|----|
| 1 | SPRING, HELICAL, COMPRESSION: S, 0.100 DIA | 13 |
| 2 | STK, 0.660 OD, 21/32 O/A LG, 4-1/2 | |
| 3 | COILS, COVER CATCH | |
| 4 | SCREW, SHOULDER: | 14 |
| 5 | COVER GROUP: | 15 |
| 6 | FLASH HIDER: CAL. .30, M6 | 16 |
| 7 | LOCK, BARREL BEARING: | 17 |
| 8 | CLIP, RETIANING ASSEMBLY: | 18 |
| 9 | FLASH HIDER: M7 | 19 |
| 10 | RING, RETIANING: | 20 |
| | BIPOD ASSEMBLY: | 21 |
| | BEARING, FRONT BARREL: | 22 |
| 11 | HANDLE ASSEMBLY: CARRYING | 23 |
| 12 | CASING AND BARREL JACKET GROUP: | 24 |

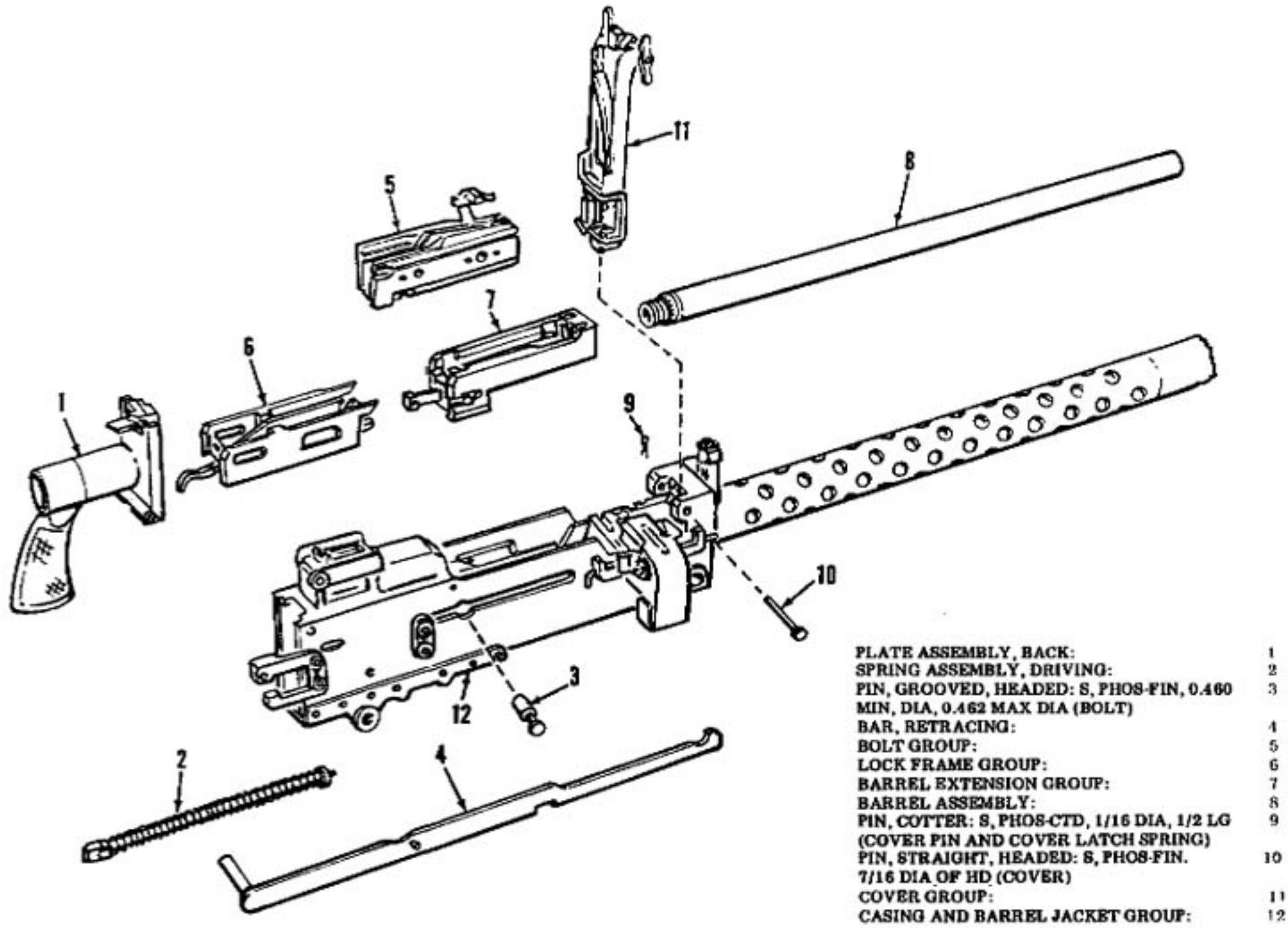
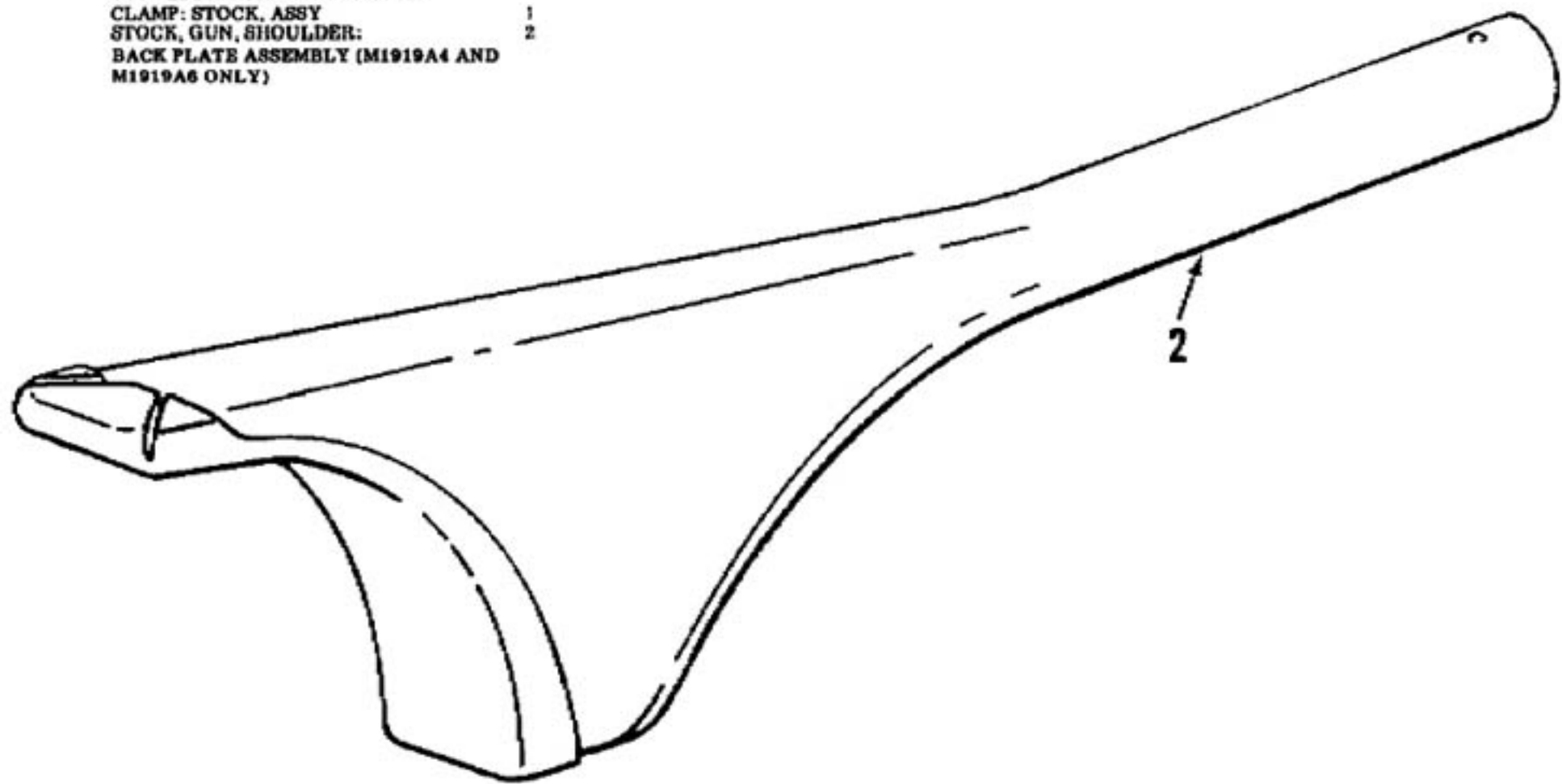


Figure B-2. Caliber .30 Machine Gun, M37—major groups and assemblies—partial exploded view.

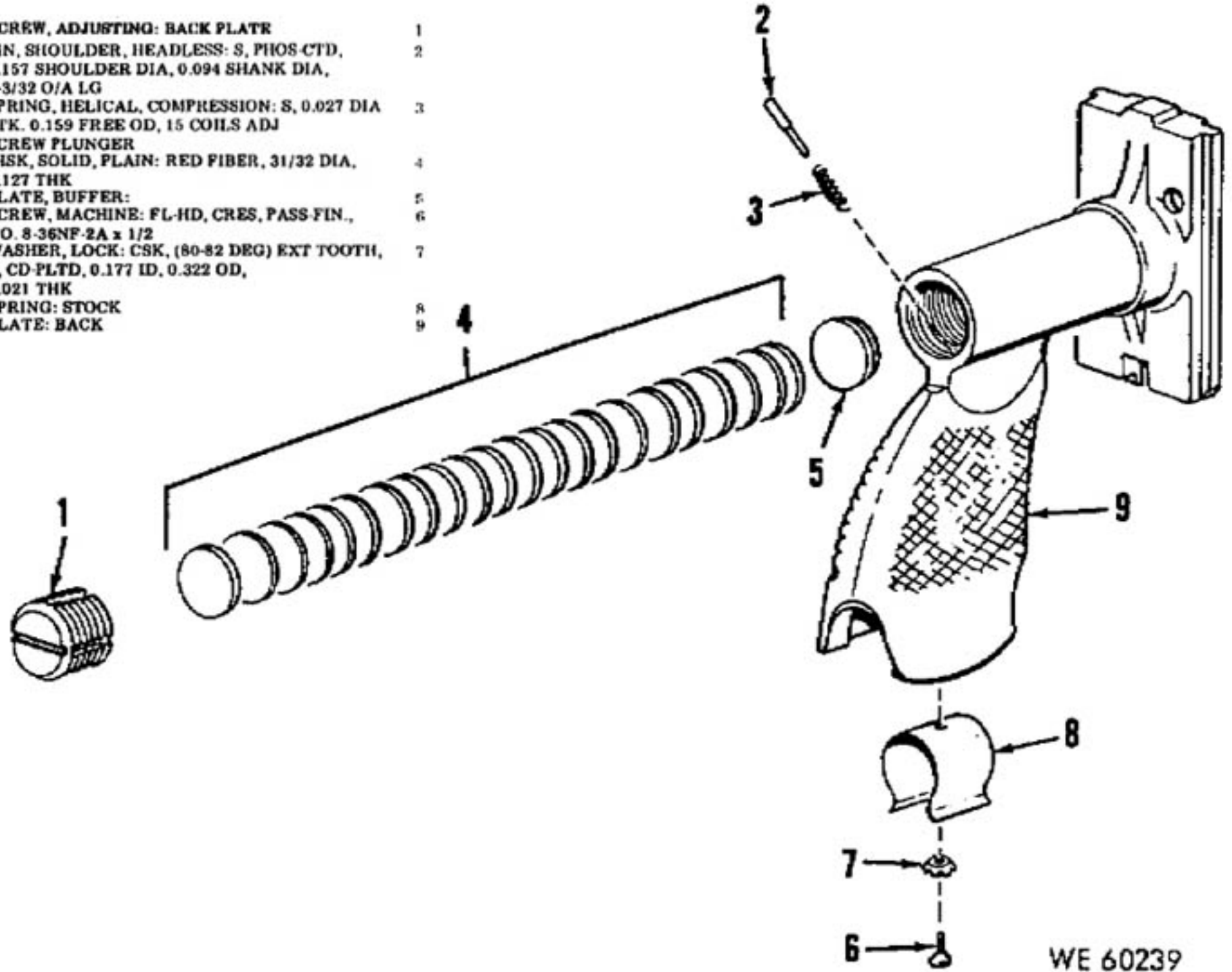
SHOULDER GUN STOCK GROUP
CLAMP: STOCK, ASSY 1
STOCK, GUN, SHOULDER: 2
BACK PLATE ASSEMBLY (M1919A4 AND
M1919A6 ONLY)



WE 60437

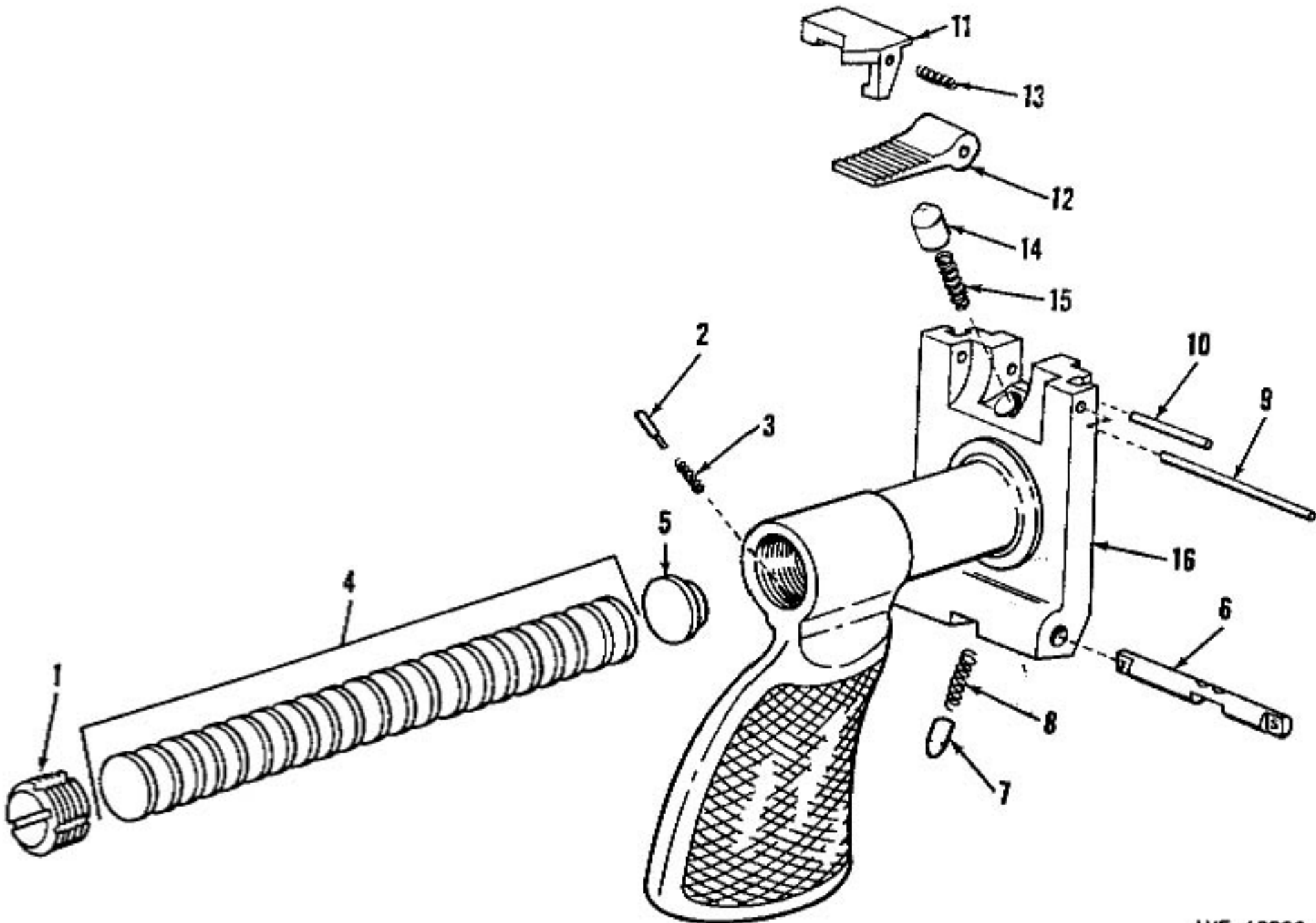
Figure B-3. Shoulder gun stock group—exploded view.

- 1 SCREW, ADJUSTING: BACK PLATE
- 2 PIN, SHOULDER, HEADLESS: S, PHOS-CTD,
0.157 SHOULDER DIA, 0.094 SHANK DIA,
1-3/32 O/A LG
- 3 SPRING, HELICAL, COMPRESSION: S, 0.027 DIA
STK. 0.159 FREE OD, 15 COILS ADJ
- 4 SCREW PLUNGER
- 5 DISK, SOLID, PLAIN: RED FIBER, 31/32 DIA,
0.127 THK
- 6 PLATE, BUFFER:
- 7 SCREW, MACHINE: FL-HD, CRES, PASS-FIN.,
NO. 8-36NF-2A x 1/2
- 8 WASHER, LOCK: CSK, (80-82 DEG) EXT TOOTH,
S, CD-PLTD, 0.177 ID, 0.322 OD,
0.021 THK
- 9 SPRING: STOCK
- PLATE: BACK



WE 60239

Figure B-4. Back plate assembly for Caliber .30 Machine Guns, M1919A4 and M1919A6 only—exploded view.



WE 60232

Figure B-5. Back plate assembly for Caliber .30 Machine Gun, M37 only—exploded view.

BACK PLATE ASSEMBLY (M37 ONLY)

SCREW, ADJUSTING: BACK PLATE

PIN, SHOULDER, HEADLESS: S, PHOS-CTD,
0.157 SHOULDER DIA, 0.094 SHANK DIA,
1-3/32 O/A LG

SPRING, HELICAL, COMPRESSION: S, 0.027 DIA
STK, 0.159 FREE OD, 15 COILS ADJ

SCREW PLUNGER

DISK, SOLID, PLAIN: RED FIBER, 31/32 DIA,
0.127 THK (BUFFER)

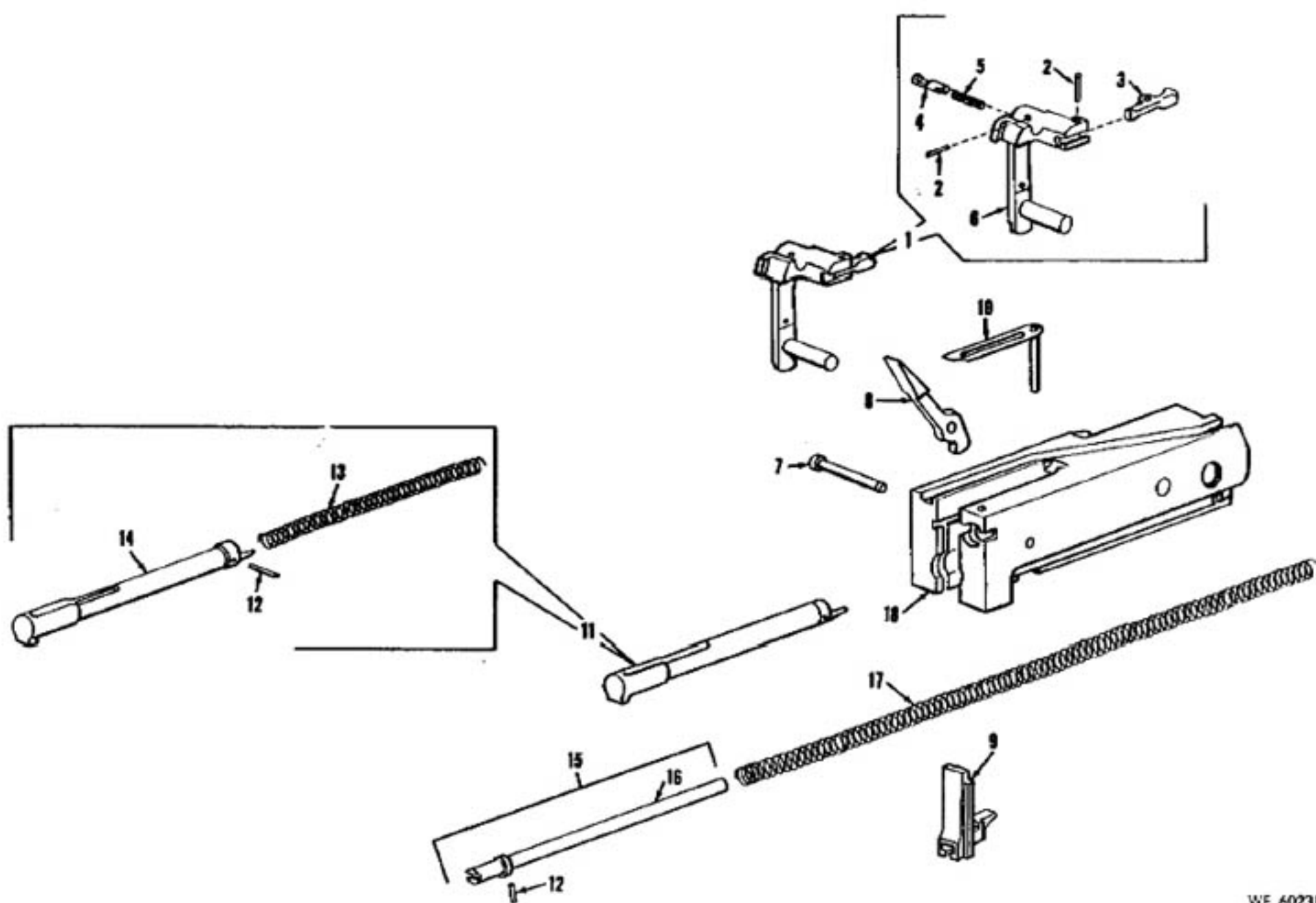
PLATE, BUFFER: BACK PLATE

SAFETY, SMALL ARMS: TRIGGER

PLUNGER, TRIGGER SAFETY SPRING:

SPRING, HELICAL, COMPRESSION: S, CD-PLTD
W/DICHROMATE-DIP, 0.020 DIA STK, 0.165
OD, 0.700 O/A LG, 13 COILS,
TRIGGER SAFETY

1	PIN, STRAIGHT, HEADLESS: S, PHOS-CTD, 0.124 MIN DIA, 0.125 MAX DIA, 2-9/64 LG (BACK PLATE LATCH LOCK)	9
2	PIN, STRAIGHT, HEADLESS: S, PHOS-CTD, 0.155 MIN DIA, 0.156 MAX DIA, 1-7/64 LG (BACK PLATE LATCH)	10
3	LOCK, BACK PLATE LATCH: BACK PLATE WITH BUFFER ASSY	11
4	LATCH, BACK PLATE: PLATE ASSY	12
5	SPRING, HELICAL, COMPRESSION: S, 0.026 DIA STK, 0.214 OD, 4 COILS, BACK PLATE	13
6	LATCH LOCK	
7	PLUNGER, BACK PLATE LATCH SPRING:	14
8	SPRING, HELICAL, COMPRESSION: S, 0.034 DIA STK, 0.150 ID, 0.803 O/A LG, 10 COILS, BACK PLATE LATCH	15
	PLATE: BACK	16

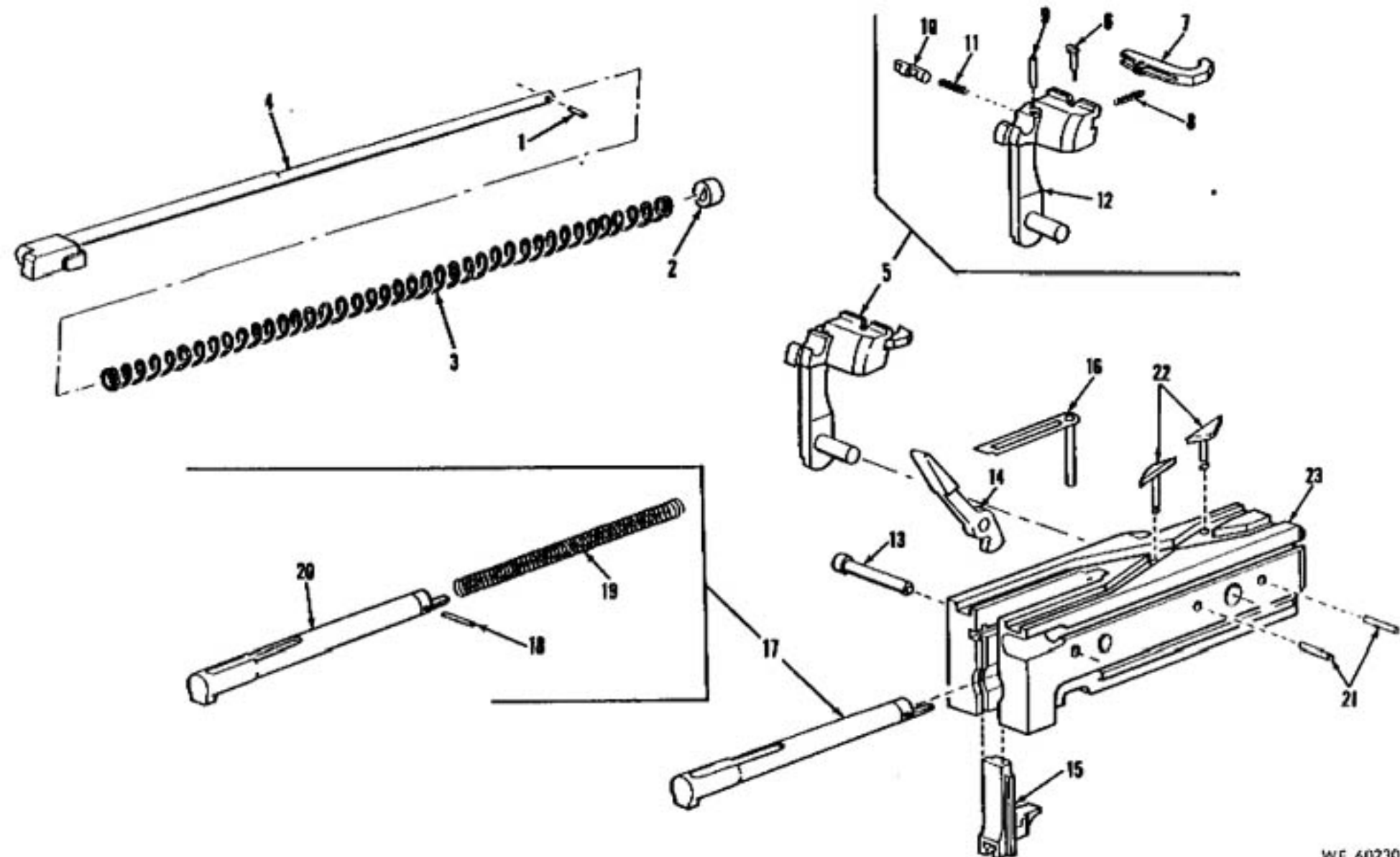


WE 60231

Figure B-6. Bolt group for Caliber .30 Machine Guns, M1919A4 and M1919A6 only—
exploded view.

BOLT GROUP (M1919A4 AND M1919A6 ONLY)
 EXTRACTOR, SMALL ARMS CARTRIDGE:
 PIN, STRAIGHT, HEADLESS: EJECTOR AND
 EXTRACTOR CAM PLUNGER
 EJECTOR, SMALL ARMS CARTRIDGE:
 PLUNGER, EXTRACTOR: CAM 0.600 O/A LG
 SPRING, HELICAL, COMPRESSION: S, 0.020 DIA
 STK, 0.187 OD, 9-1/2 COILS
 EXTRACTOR CAM PLUNGER 6147228 (19204)
 EXTRACTOR:
 PIN, GROOVED, HEADED: FL-PIL-HD, S,
 PHOS-CTD, 0.205 SHANK DIA,
 1.370 SHANK LG
 LEVER, COCKING:

1	SEAR:	9
2	SPRING, SEAR:	10
	PIN ASSEMBLY, FIRING: S, PHOS-CTD, 0.075	11
	MAX STRIKING END DIA, 4.795 MAX O/A LG	
3	PIN, STRAIGHT, HEADLESS: S, PHOS-CTD, 0.094	12
4	MAX DIA, 0.4865 O/A LG	
5	SPRING, HELICAL, COMPRESSION: S, 0.0414 DIA	13
	STK, 0.259 OD, 50 COILS, FIRING PIN	
	PIN: FIRING	14
6	ROD ASSEMBLY, DRIVING SPRING:	15
7	ROD: DRIVING SPRING, 0.272 IN. DIA	16
	SPRING, HELICAL, COMPRESSION: S, CD-PLTD,	17
	0.045 DIA STK, 0.390 OD, 15-7/8 O/A	
	LG, 103 COILS, DRIVING	
8	BOLT BREECH:	18



WE 60230

Figure B-7. Driving spring assembly and bolt group for Caliber .30 Machine Gun, M37 only—exploded view.

DRIVING SPRING ASSEMBLY AND BOLT GROUP (M37 ONLY)

PIN, SHOULDER, HEADLESS: S, PHOS-FIN., CHAM END, 5/16 LG (DRIVING SPRING)

COLLAR, DRIVING SPRING ROD:

SPRING, HELICAL, COMPRESSION: S, 0.032 DIA STK, 0.398 OD, 13-5/16 O/A LG, 58 COILS, DRIVING SPRING ROD

ROD, DRIVING SPRING:

EXTRACTOR, SMALL ARMS CARTRIDGE:

PIN, EJECTOR:

EJECTOR, SMALL ARMS CARTRIDGE:

SPRING, HELICAL, COMPRESSION: S, 0.025 X 0.039 DIA STK, 0.168 OD, 0.320 O/A LG, 6 COILS, EJECTOR

PIN, STRAIGHT, HEADED: S, PHOS-FIN., FL HD, 0.130 LG, 0.004 DIA OF HD EXTRACTOR

PLUNGER

PLUNGER, EXTRACTOR:

SPRING, HELICAL, COMPRESSION: S, 0.024 DIA STK, 0.185 OD, 9-1/2 COILS, EXTRACTOR

1 PLUNGER

EXTRACTOR:

2 PIN, GROOVED, HEADED: FL-FIL-HD, S, 13

PHOS-CTD, 0.205 SHANK DIA, 1.370

3 SHANK LG

LEVER, COCKING:

4 SEAR:

5 SPRING, SEAR:

6 PIN, ASSEMBLY, FIRING: S, PHOS-CTD, 0.075

7 MAX STRIKING END DIA, 4.795 MAX O/A LG

8 PIN, STRAIGHT, HEADLESS: S, PHOS-CTD,

9 0.094 MAX DIA, 0.4865 O/A LG

SPRING, HELICAL, COMPRESSION: S, 0.0414 DIA

10 STK, 0.259 OD, 60 COILS, FIRING PIN

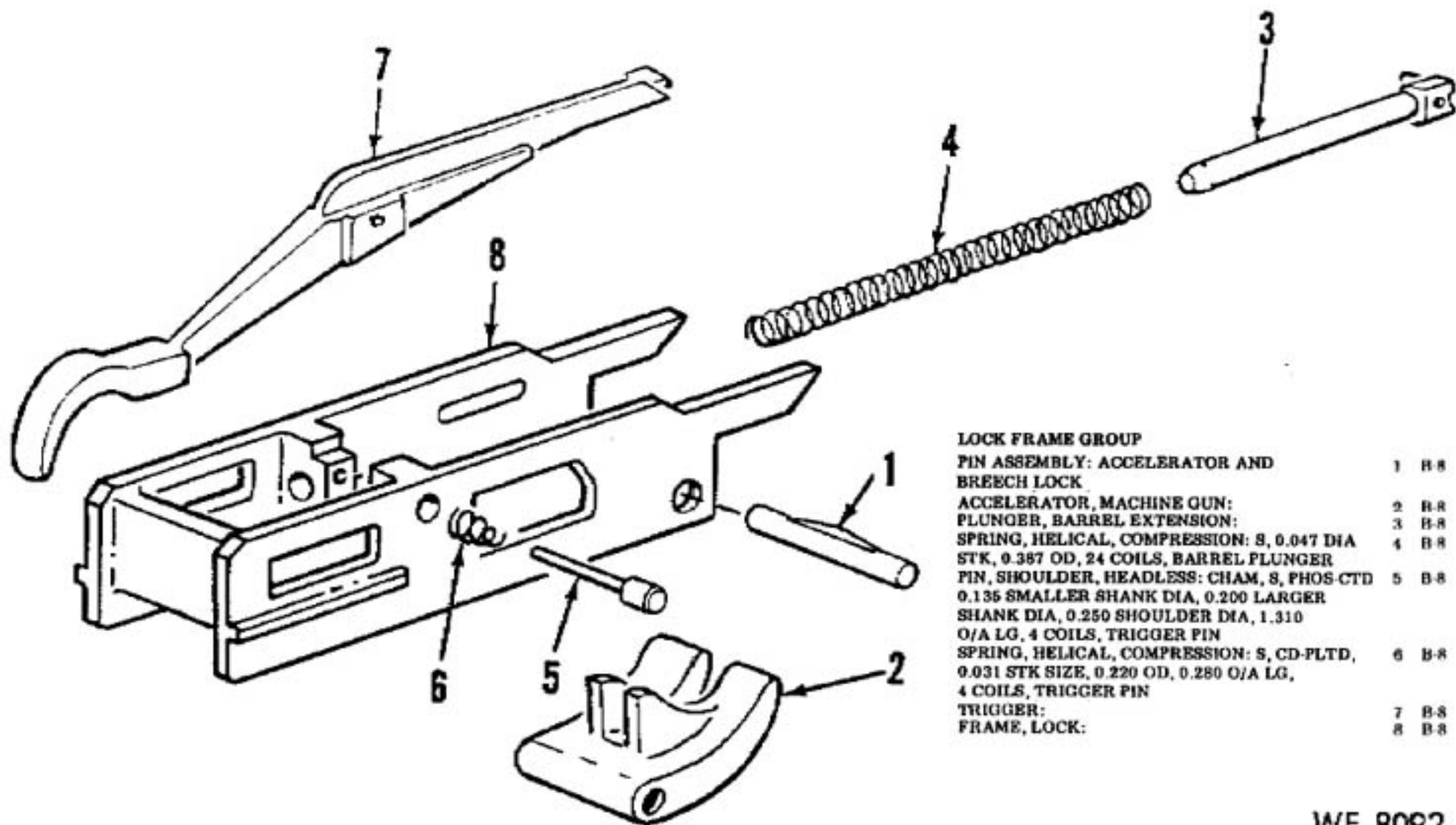
PIN: FIRING

20 PIN, SPRING: SLOTTED, S, PHOS-CTD, 5/32

21 NOM DIA, 3/4 LG (BOLT SWITCH)

22 SWITCH, ALTERNATE FEED BOLT:

23 BOLT, BREECH:



WE 8092

Figure B-8. Lock frame group—exploded view.

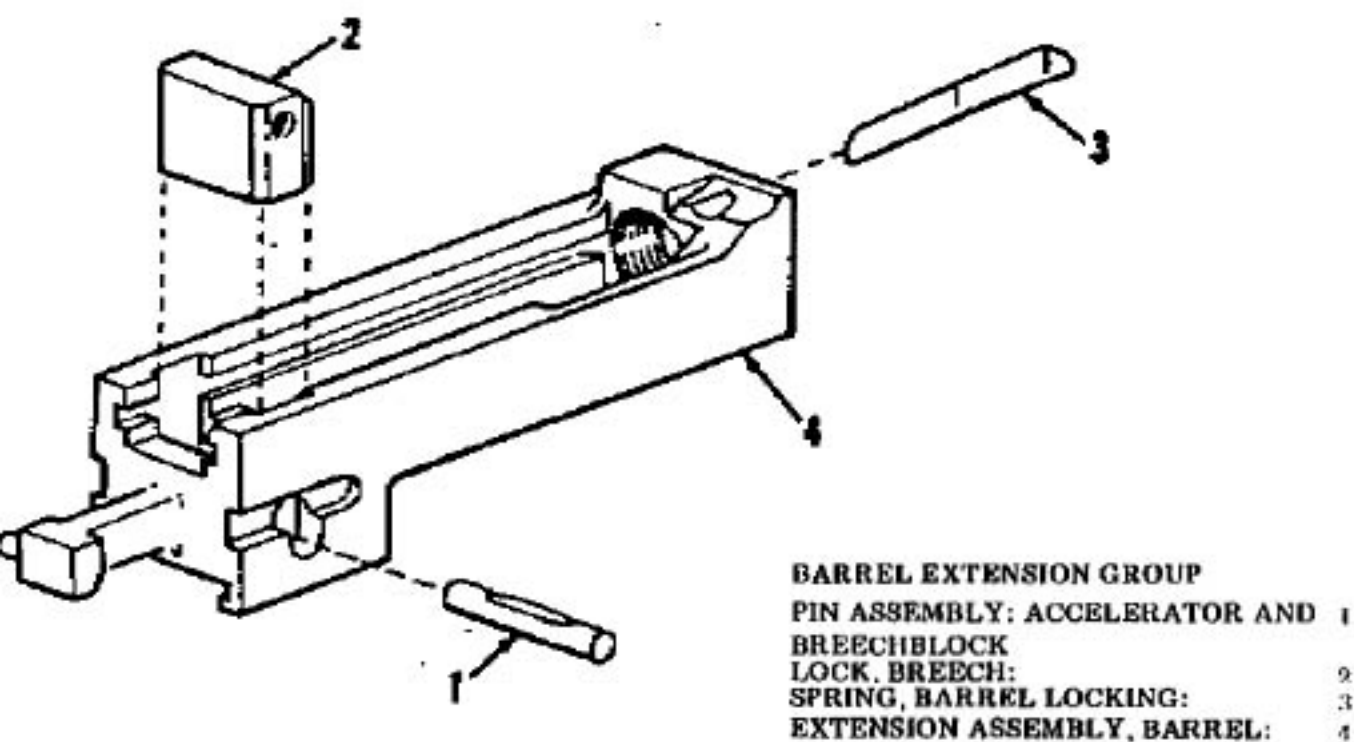
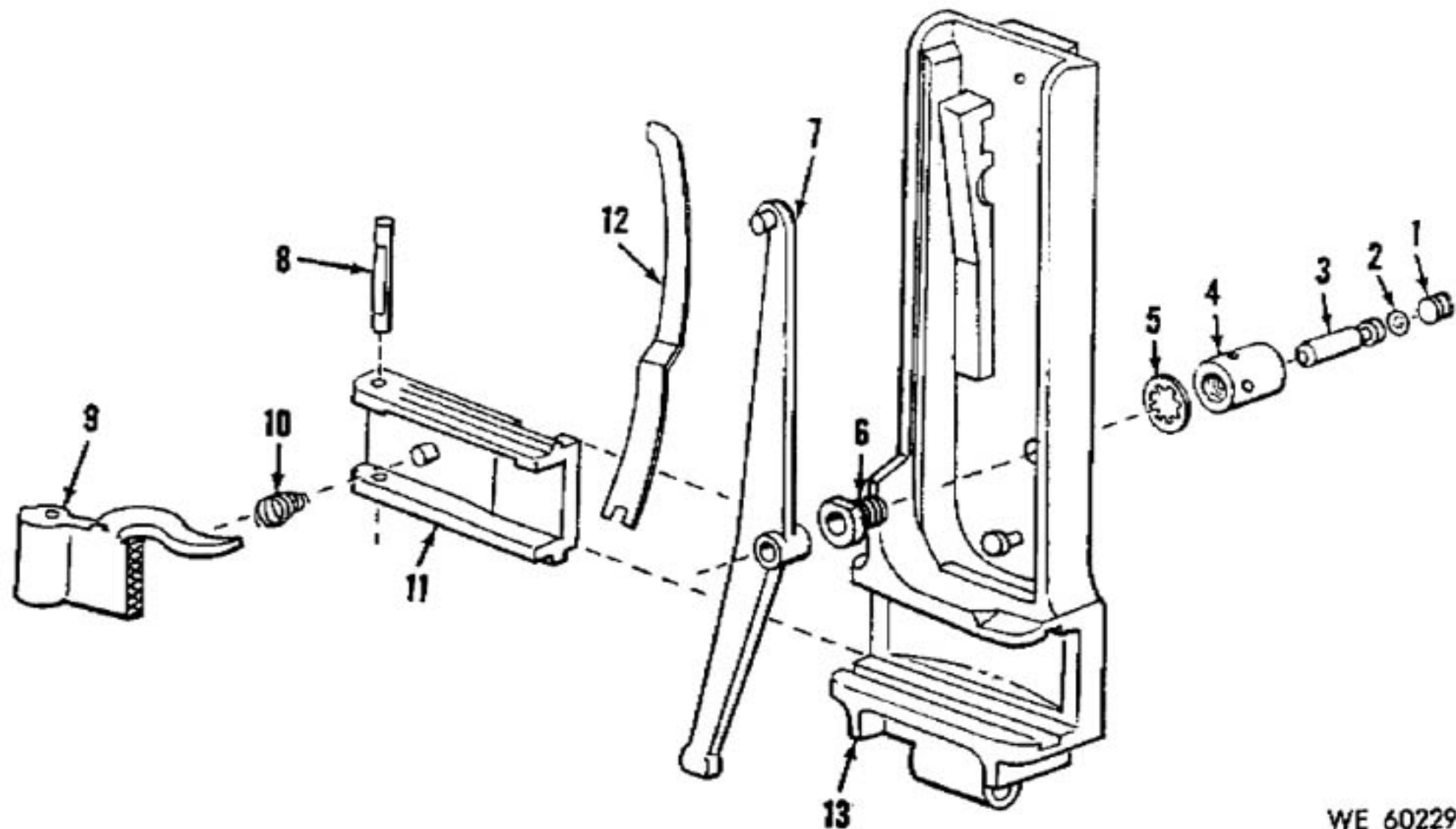


Figure B-9. Barrel extension group—exploded view.



WE 60229

Figure B-10. Cover group for Caliber .30 Machine Guns, M1919A4 and M1919A6 only—exploded view.

COVER GROUP (M1919A4 AND M1919A6 ONLY)

SETSCREW: SLTD, S, PHOS-CTD, FL-PT,
3/8-24 UNF-3A, 0.235 LG

WASHER, LOCK: S, CD-PLTD, 0.138 ID,
0.295 OD, 0.017 THK

PIN, GROOVED, HEADED: S, BLK-OXIDE FIN,
FL-HD, 0.257 MIN DIA OF HD, 0.261 MAX
DIA OF HD (BELT FEED LEVER)

NUT, BELT FEED LEVER PIVOT BUSHING:
WASHER, LOCK: INT-TEETH, S,
PHOS-CTD, 3/8 BOLT SIZE

BUSHING, MACHINE THREAD: BELT FEED

LEVER PIVOT

LEVER, BELT FEED:

PIN: BELT FEED PAWL

PAWL, BELT FEED:

SPRING, HELICAL, COMPRESSION: S, 0.032 DIA
STK, 0.340 OD, 0.780 O/A LG, 6 COILS,
BELT FEED PAWL

SLIDE, BELT FEED:

SPRING, COVER EXTRACTOR:

COVER ASSEMBLY:

6

7

8

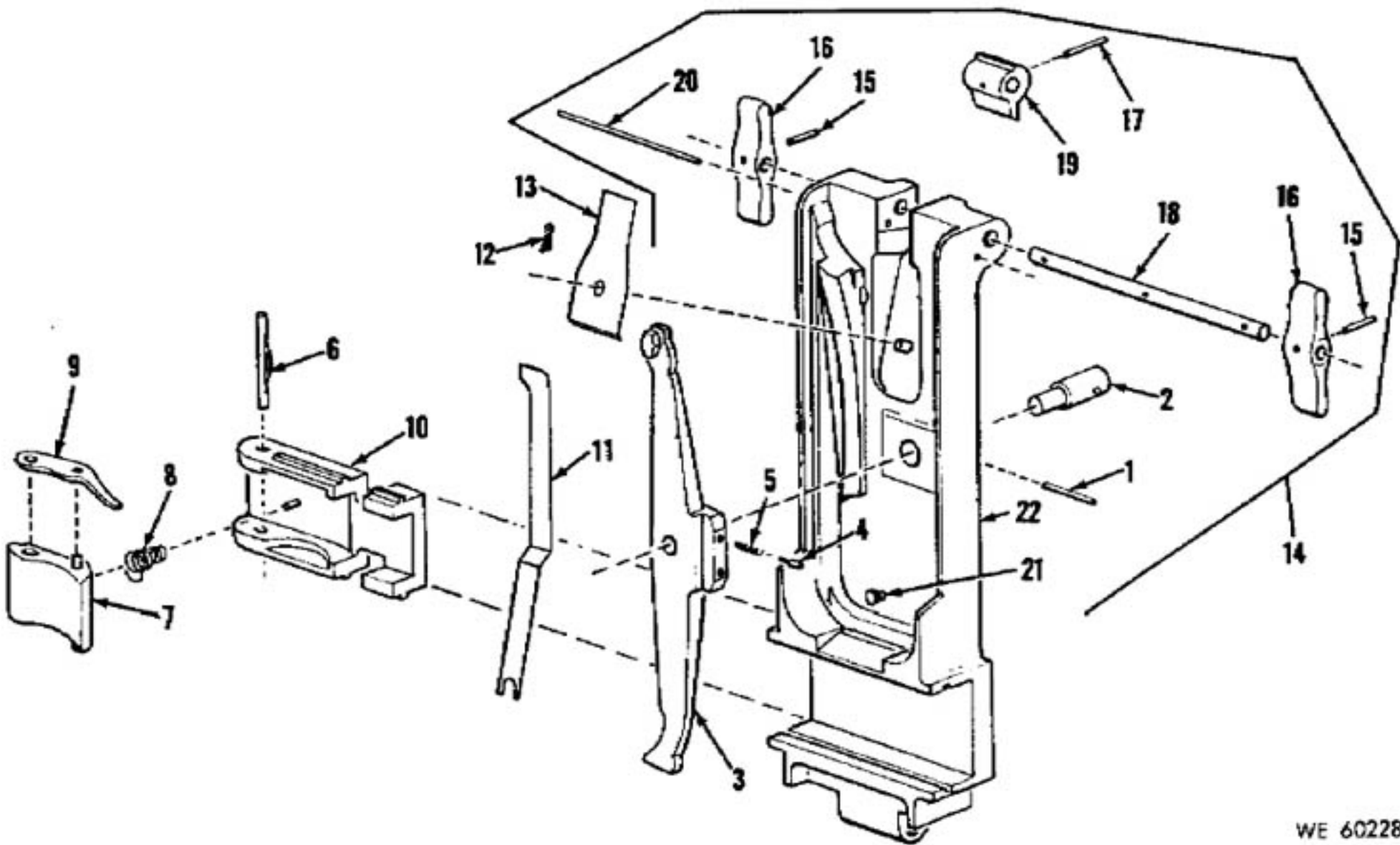
9

10

11

12

13



WE 60228

Figure B-11. Cover group for Caliber .30 Machine Gun, M37 only—exploded view.

COVER GROUP (M37 ONLY)

PIN, SPRING: S, CD-PLTD, 0.094 DIA, 0.688 LG, 0.022 THK (FEED LEVER PIN)

PIN, STRAIGHT, HEADED: BELT FEED LEVER LEVER, BELT FEED:

PIN, SHOULDER, HEADLESS: S, PHOS-FIN, SQ-END, 7/32 LG O/A (BELT FEED LEVER)

SPRING, HELICAL, COMPRESSION: S, 0.024 DIA STK, 0.152 OD, 0.469 O/A LG, 8 COILS, BELT FEED LEVER

PIN ASSEMBLY, BELT FEED PAWL:

PAWL, BELT FEED:

SPRING, BELT FEED PAWL:

ARM, BELT FEED PAWL:

SLIDE, BELT FEED:

1	SPRING, COVER EXTRACTOR:	11
2	PIN, COTTER: S, PHOS-CTD, 1/16 DIA, 1/2 LG (COVER PIN AND COVER LATCH SPRING)	12
3	SPRING, COVER LATCH:	13
4	COVER ASSEMBLY:	14
5	PIN, COVER LATCH: S, 0.094 X 19/32 COVER LATCH KNOB	15
6	KNOB: COVER LATCH	16
7	PIN, COVER LATCH: S, 0.094 X 23/32	17
8	SHAFT: COVER LATCH	18
9	LATCH, COVER:	19
10	STOP: COVER LATCH	20
	STUD, COVER ASSEMBLY:	21
	COVER:	22

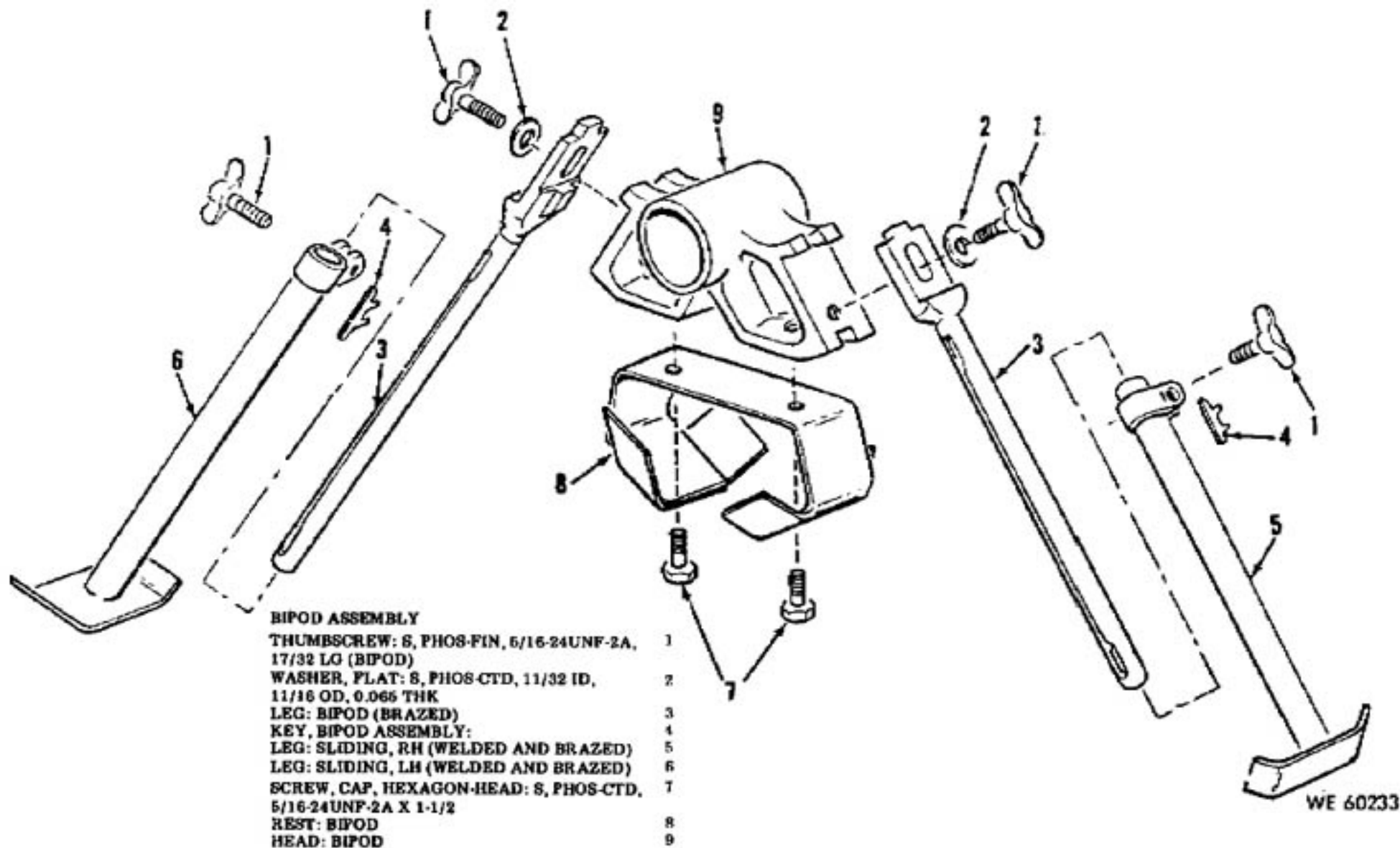
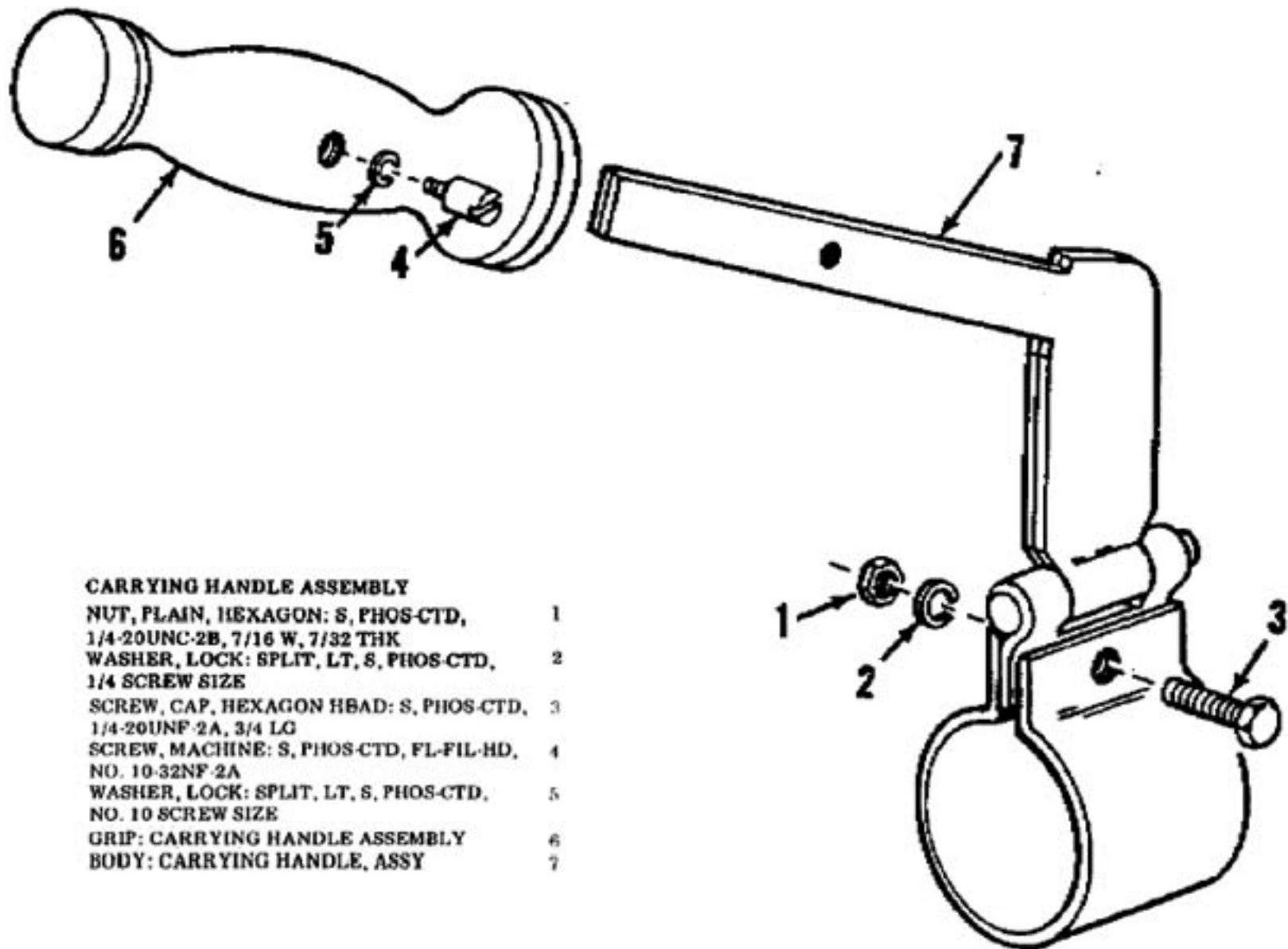


Figure B-12. Bipod assembly—Caliber .30 Machine Gun, M1919A6 only—exploded view.



CARRYING HANDLE ASSEMBLY

NUT, PLAIN, HEXAGON: S, PHOS-CTD, 1/4-20UNC-2B, 7/16 W, 7/32 THK	1
WASHER, LOCK: SPLIT, LT, S, PHOS-CTD, 1/4 SCREW SIZE	2
SCREW, CAP, HEXAGON HBAD: S, PHOS-CTD, 1/4-20UNF-2A, 3/4 LG	3
SCREW, MACHINE: S, PHOS-CTD, FL-FIL-HD, NO. 10-32NF-2A	4
WASHER, LOCK: SPLIT, LT, S, PHOS-CTD, NO. 10 SCREW SIZE	5
GRIP: CARRYING HANDLE ASSEMBLY	6
BODY: CARRYING HANDLE, ASSY	7

WE 60446

Figure B-13. Carrying handle assembly—Caliber .30 Machine Guns, M1919A1 and M1919A6 only—exploded view.

- CASING AND BARREL JACKET GROUP
(M1919A4 AND M1919A6 ONLY)
- PIN, SPRING: TUBULAR, COILED, S, PHOS-FIN 1
1/16 NOM DIA, 9/16 LG (REAR SIGHT
WINDAGE KNOB)
- KNOB, REAR SIGHT WINDAGE SCREW: 2
- PLUNGER, REAR SIGHT WINDAGE CLICK: 3
- SPRING, HELICAL, COMPRESSION: 4
- SCREW, WINDAGE, REAR SIGHT: 5
- LEAF, SIGHT ASSEMBLY, REAR, FOLDING: 6
- SCREW, REAR SIGHT WINDAGE: 7
- SCALE, REAR SIGHT WINDAGE: 8
- SPRING, REAR SIGHT BASE: 9
- PIN, SHOULDER, HEADLESS: S, PHOS-CTD, 10
SQ. ENDS, 0.312 LG O/A STOP,
(REAR SIGHT LEAF)
- BUSHING: REAR SIGHT WINDAGE SCREW 11
- SCREW, MACHINE: S, 0.370 MIN DIA OF HD, 12
0.373 MAX DIA OF HD
- FRONT SIGHT GROUP 13
- SCREW, MACHINE: FL-HD, S, PHOS-CTD, 14
NO. 10-32NF-2A X 1/4
- JACKET, BARREL: 15
- JACKET, BARREL: 16
- LATCH, COVER: 17
- SCREW, MACHINE: SLTD-DRIVE, SOLE CHAM 18
S, PHOS-CTD, 5/16 24UNF-3A, 3/8 LG
(BREECH LOCK CAM)
- CAM, LOCK, BREECH: 19
- STOP, SHORT ROUND: 20
- STOP, FRONT CARTRIDGE: SHORT ROUND 21
- PIN, BELT HOLDING PAWL: 22
- PAWL, BELT HOLDING: 23
- SPRING, HELICAL, COMPRESSION: S, CD-PLTD, 24
0.023 STK, 0.137 OD, 0.650 O/A LG,
13 COILS, BELT HOLDING PAWL
- RIVET, SOLID: CK-HD, S, 0.218 X 0.655 25
(REAR CARTRIDGE STOP)
- STOP, REAR CARTRIDGE: 26
- RIVET, SOLID: CK-HD, S, 0.188 X 0.605 27
(MOUNT ADAPTER)
- RIVET, SOLID: CK-HD, S, 0.3427 X 0.025 28
(TRUNNION)
- BLOCK: TRUNNION ASSY 29
- RIVET, SOLID: 60 DEG FLUSH CK-HD, S, 30
0.155 SHANK DIA, 0.420 LG (EXTRACTOR
CAM, EXTRACTOR, FEED CAM)
- CAM, EXTRACTOR: 31
- CAM, FEED EXTRACTOR: 32
- RIVET, SOLID: CK-HD, S, 0.187 X 0.437 33
(BOTTOM PLATE)
- RIVET, SOLID: TOP PLATE, SHORT 34
- RIVET, SOLID: OVAL CK-HD, S, 0.20 X 2.08 35
(TOP PLATE, LONG)
- RIVET, SOLID: CK-HD, S, 0.186 X 2.557 36
(SIDE PLATE, SMALL)
- RIVET, SOLID: 60 DEG CK-HD, S, PHOS-CTD, 37
0.187 SHK DIA, 0.495 SHK LG (SIGHT BASE)
- RIVET, SOLID: CK-HD, S, 0.155 X 0.655 38
(BELT HOLDING PAWL BRACKET)
- CASING ASSEMBLY: 39
- CASING ASSEMBLY: 40

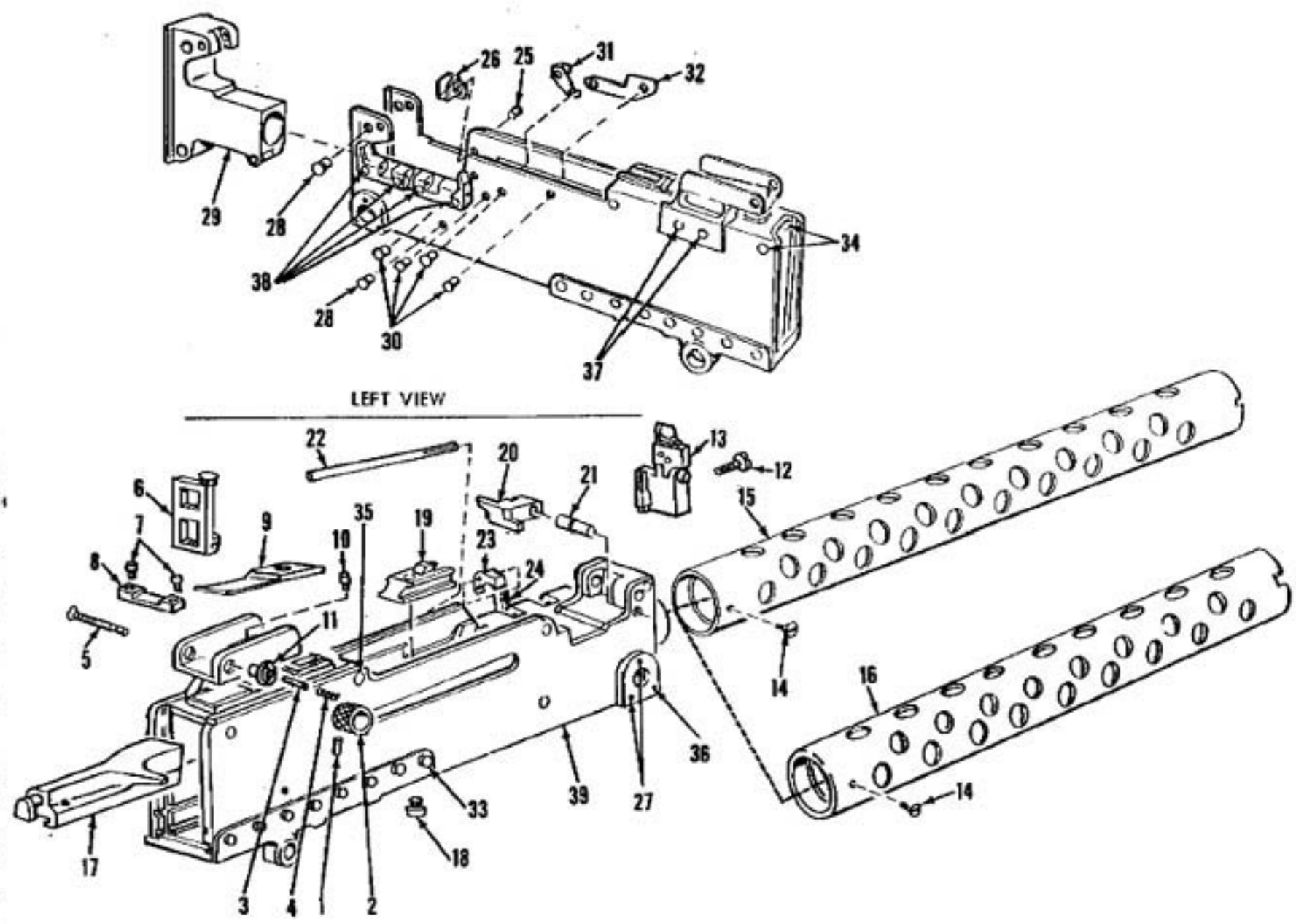
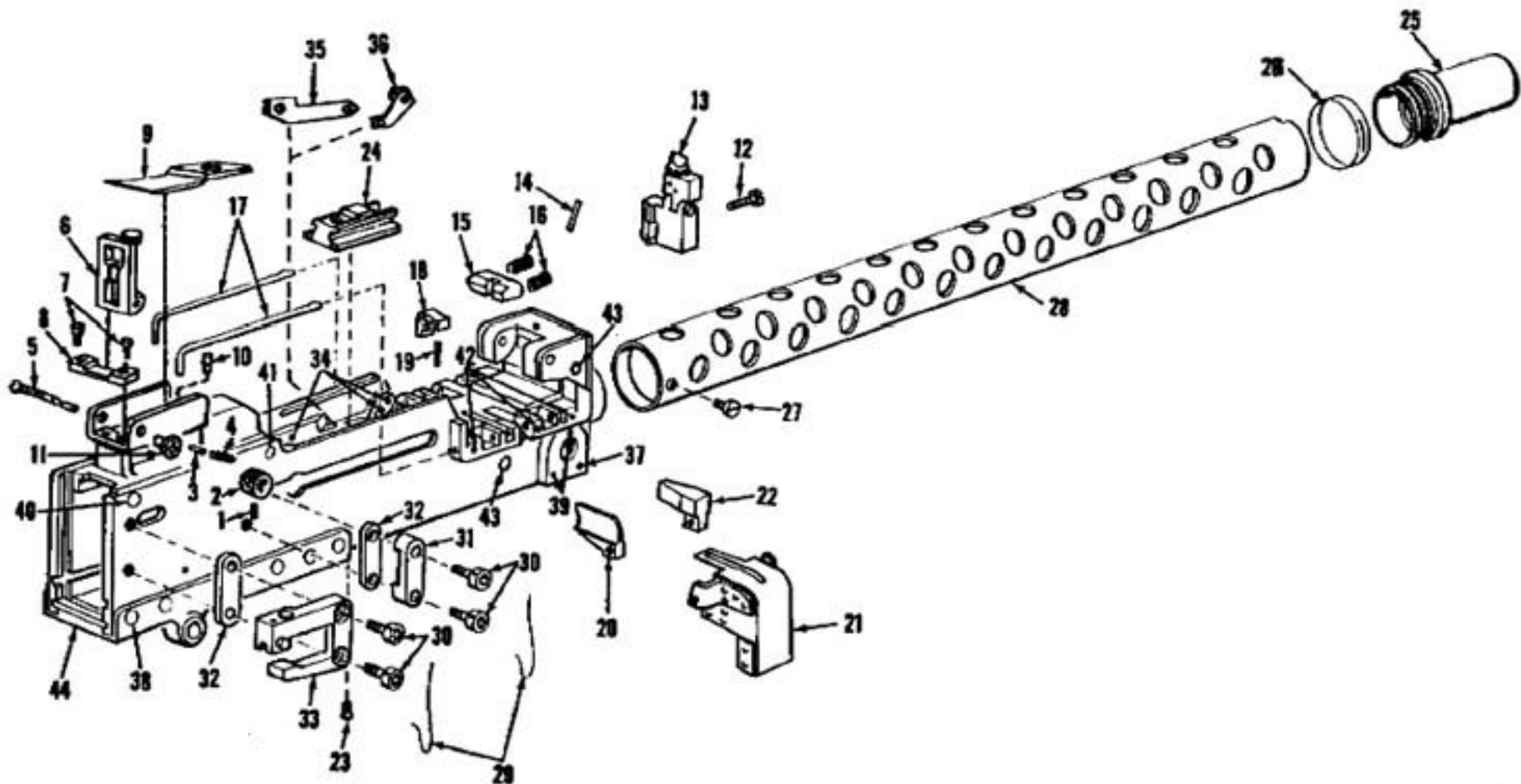


Figure B-14. Casing and barrel jacket group for Caliber .30 Machine Guns, M1919A4 and M1919A6 only—exploded view.



WE 8220A

Figure B-15. Casing and barrel jacket group for Caliber .30 Machine Gun, M37 only—exploded view.

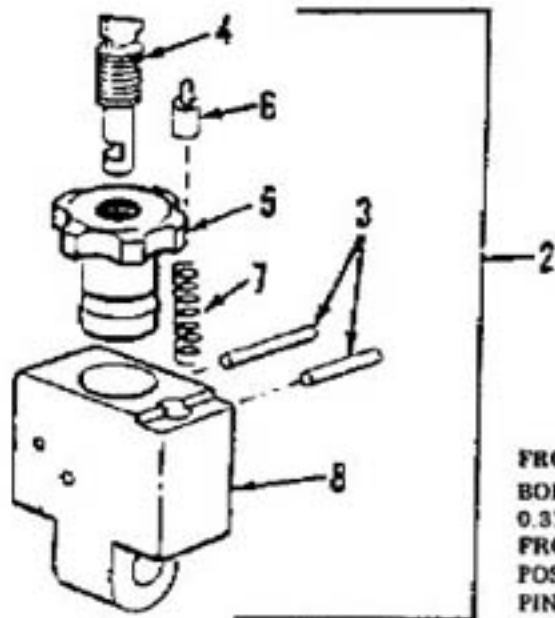
CASING AND BARREL JACKET GROUP (M37 ONLY)

PIN, SPRING: TUBULAR, COILED, S, PHOS-FIT 1/16 NOM DIA, 9/16 LG (REAR SIGHT WINDAGE KNOB)
 KNOB, REAR SIGHT WINDAGE SCREW:
 PLUNGER, REAR SIGHT WINDAGE CLICK:
 SPRING, HELICAL, COMPRESSION:
 SCREW, WINDAGE, REAR SIGHT:
 LEAF, SIGHT ASSEMBLY, REAR, FOLDING:
 SCREW, REAR SIGHT WINDAGE:
 SCALE, REAR SIGHT WINDAGE:
 SPRING, REAR SIGHT BASE:
 PIN, SHOULDER, HEADLESS: S, PHOS-CTD, SQ. ENDS, 0.312 LG O/A STOP, (REAR SIGHT LEAF)
 BUSHING: REAR SIGHT WINDAGE SCREW
 SCREW, MACHINE: S, 0.370 MIN DIA OF HD, 0.373 MAX DIA OF HD
FRONT SIGHT GROUP
 PIN, SPRING: S, CD-PLTD, 0.078 DIA, 3/4 LG, 0.018 THK (COVER DETENT PAWL)
 PAWL, COVER, DETENT:

SPRING, HELICAL, COMPRESSION: S, CD-PLTI W/DICHROMATE-DIP, 0.045 DIA STK, 0.255 OD 0.934 O/A LG, 13 COILS, COVER DETENT PAWL
 PIN ASSEMBLY, BELT HOLDING PAWL:
 2 PAWL, BELT HOLDING:
 3 SPRING, HELICAL, COMPRESSION: S, CD-PLTI 0.023 STK, 0.137 OD, 0.650 O/A LG, 13 COILS, BELT HOLDING PAWL
 4 STOP, REAR CARTRIDGE:
 5 CHUTE, LINK:
 6 STOP, FRONT CARTRIDGE:
 8 SCREW, MACHINE: SLTD-DRIVE, SGLE CHAM, S, PHOS-CTD, 5/16-24UNF-3A, 3/8 LG (BREECH LOCK CAM)
 CAM, LOCK, BREECH:
 BEARING, BARREL, FRONT:
 11 LOCK, BARREL BEARING:
 12 SCREW, MACHINE: FL-HD, S, PHOS-CTD, NO. 10-32NF-2A X 1/4
 13 JACKET, BARREL:
 14 WIRE, STEEL, CARBON: (MANUFACTURED FROM 9505-248-9849)
 15 SCREW, CAP, SOCKET HEAD: RETRACTING BAR GUIDE

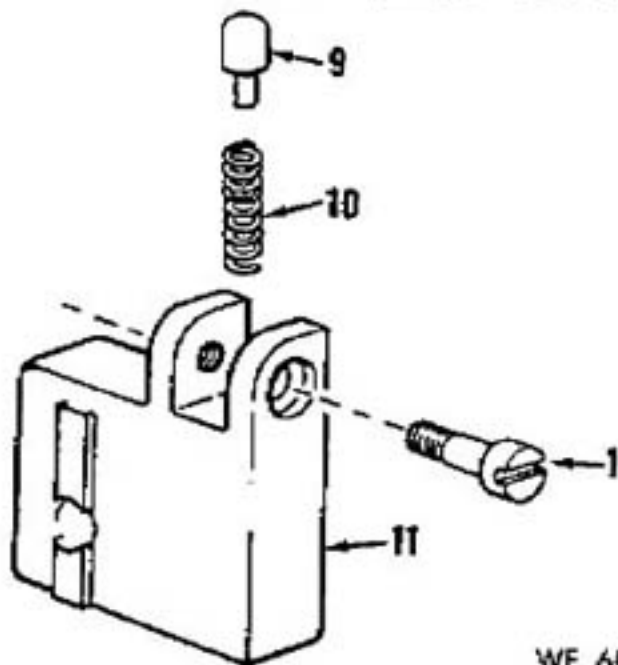
16 GUIDE, RETRACTING-BAR, FRONT: S, 0.500 W, 31 0.295 H, 1.750 O/A LG, 2 HOLES
 17 SPACER, RETRACTING-BAR GUIDE: S, 0.500 W, 32 0.157 H, 1.750 O/A LG, 2 HOLES
 18 RETRACTING BAR GROUP
 19 RIVET, SOLID: 60 DEG FLUSH-CK-HD, S, 0.166 SHANK DIA, 0.420 LG (EXTRACTOR CAM, EXTRACTOR, FEED CAM)
 20 CAM, FEED EXTRACTOR: SIDE PLATE
 21 CAM, EXTRACTOR: BREECH LOCK
 22 RIVET, SOLID: CK-HD, S, 0.188 X 2.557 (SIDE PLATE, SMALL)
 23 RIVET, SOLID: CK-HD, S, 0.187 X 0.437 (BOTTOM PLATE)
 24 RIVET, SOLID: CK-HD, S, 0.188 X 0.505 (MOUNT ADAPTER)
 25 RIVET, SOLID: TOP PLATE, SHORT
 26 RIVET, SOLID: OVAL-CK-HD, S, 0.20 X 2.06 (STOP PLATE, LONG)
 27 RIVET, SOLID: CK-HD, S, 0.155 X 0.655 (BELT HOLDING PAWL BRACKET)
 28 RIVET, SOLID: CK-HD, S, 0.3427 X 2.025 (TRUNNION)
 30 CASING ASSEMBLY:

44



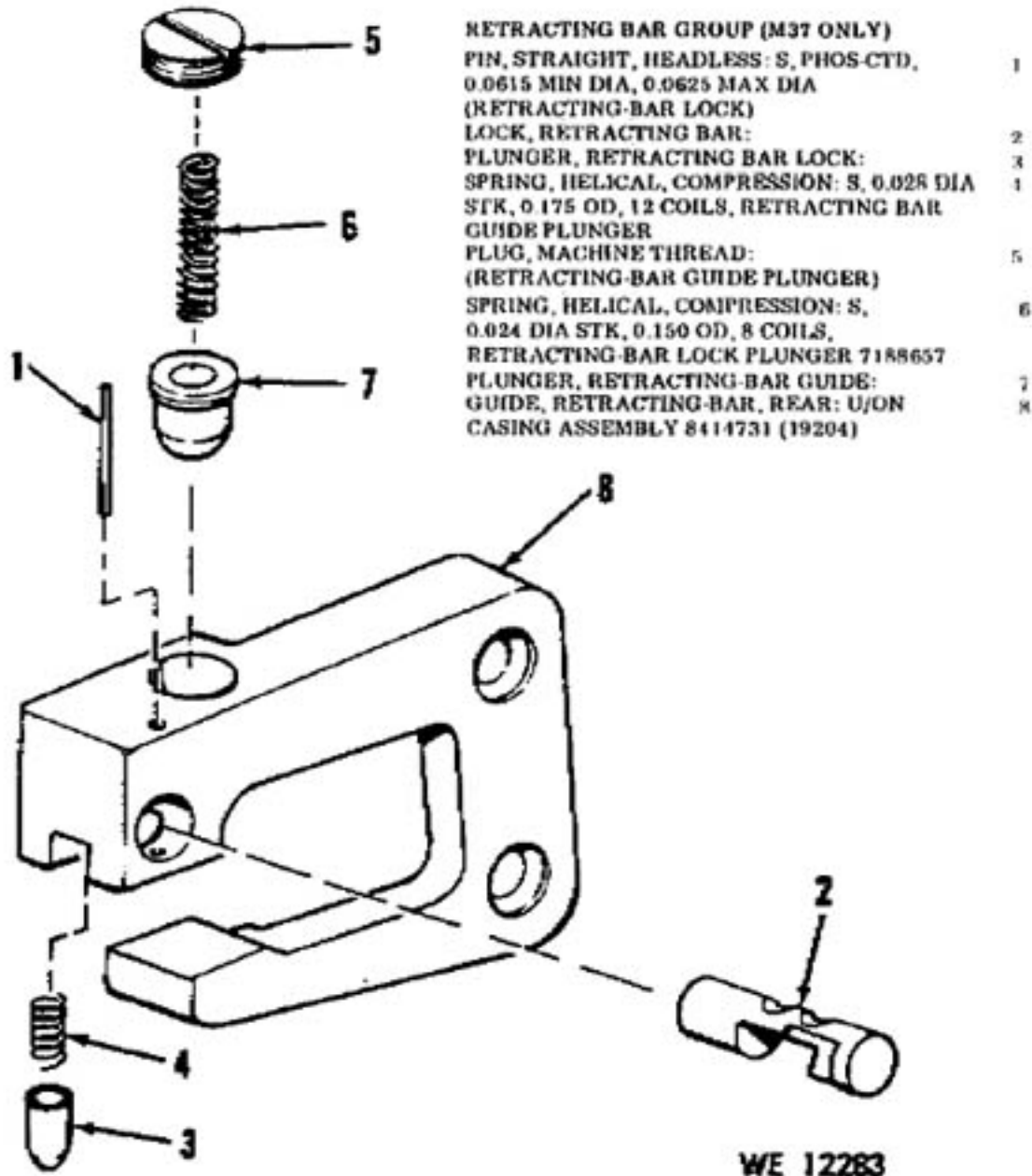
FRONT SIGHT GROUP

- | | |
|---|----|
| BOLT, SHOULDER: S, PHOS-FIN, FL-HD, 0.310 IN. 0.005 DIA OF HD (BEARING, FRONT SIGHT) | 1 |
| POST, FRONT SIGHT, ASSEMBLY: | 2 |
| PIN, STRAIGHT, HEADLESS: DOWEL, S, 0.063 X 0.390 (FRONT SIGHT POST) | 3 |
| BLADE, FRONT SIGHT: | 4 |
| NUT, ADJUSTING, FRONT SIGHT: BLADE | 5 |
| PLUNGER, POST, FRONT SIGHT: | 6 |
| SPRING, HELICAL, COMPRESSION: S, FRONT SIGHT PLUNGER, 0.020 DIA STK, 0.123 OD, 14 COILS | 7 |
| POST, FRONT SIGHT: | 8 |
| PIN, SHOULDER, HEADLESS: S, PHOS-CTD, SQ. END, 0.546 MIN LG O/A, 0.562 MAX LG O/A (FRONT SIGHT) | 9 |
| SPRING, HELICAL, COMPRESSION: S, 0.034 DIA STK, 0.224 OD, 1.000 O/A LG, 15 COILS (FRONT SIGHT BODY) | 10 |
| BODY: FRONT SIGHT BRACKET | 11 |



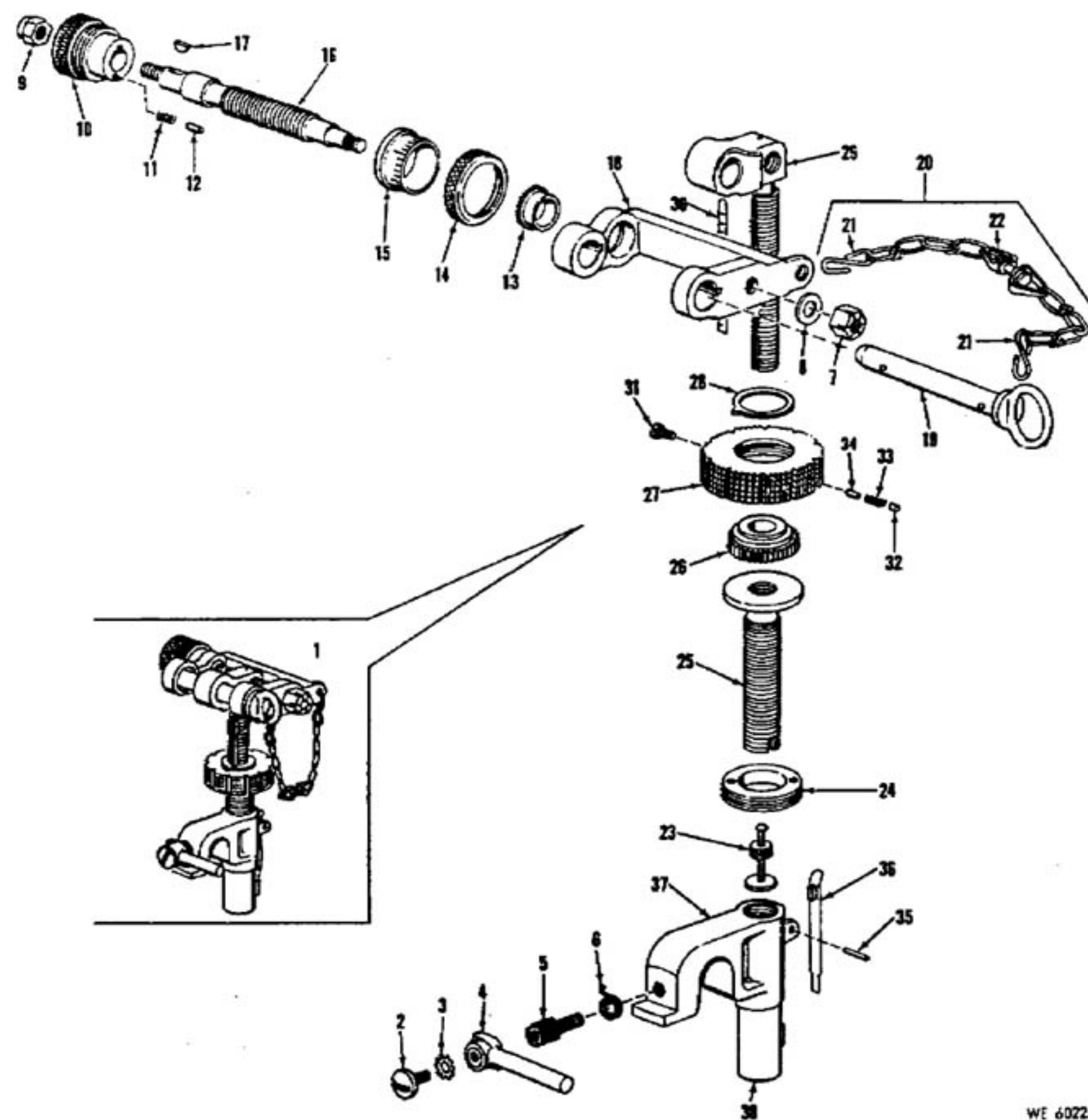
WE 60227

Figure B-16. Front sight assembly—exploded view.



WE 12283

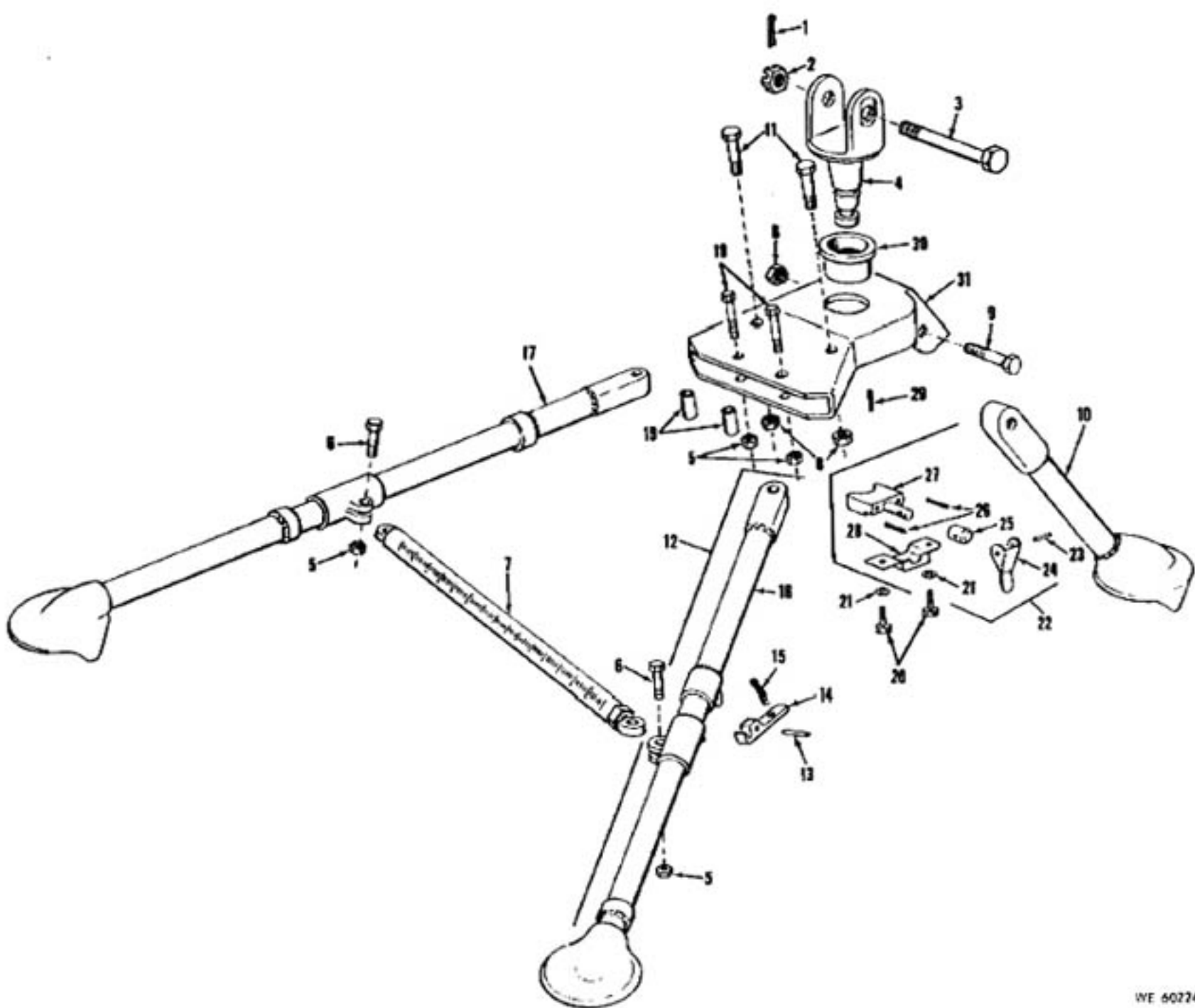
Figure B-17. Retracting bar group for Caliber .30 Machine Gun, M37 only—exploded view.



- REPAIR PARTS FOR TRIPOD MOUNT, M2
 TRAVERSING AND ELEVATING MECHANISM
 ASSEMBLY
- | | |
|--|----|
| MECHANISM ASSEMBLY, TRAVERSING AND ELEVATING | 1 |
| SCREW, MACHINE: S, BUTTON HD, PHOS-CTD, NO. 10-32NF-2A, 5/16 LG | 2 |
| WASHER, LOCK: S, EXT-TEETH, PHOS-CTD, NO. 12 SCREW SIZE 125754 (19204) | 3 |
| LEVER, TRAVERSING SLIDE LOCK: | 4 |
| SPRING, TRAVERSING SLIDE LOCK: | 5 |
| SCREW, HELICAL, TORSION: 0.040 DIA STK, 0.427 ID, 0.507 OD, 2 COILS | 6 |
| NUT, SELF-LOCKING, HEXAGON: S, CD- OR ZN-PLTD, 1/4-28UNF-3B, | 7 |
| 7/16 W, 5/16 THK MS | |
| WASHER, THRUST: S, PLAIN, PHOS-BLK-FIN, 17/64 ID, 0.500 OD, 0.062 THK TRAV SCREW NUT | 8 |
| NUT, SELF-LOCKING, HEXAGON: S, PHOS-CTD, 5/16 24UNF-3B, 1/2 W, 11/32 THK | 9 |
| HANDWHEEL, TRAVERSING: | 10 |
| SPRING, HELICAL, COMPRESSION: S, BLK-OXIDE-FIN, 0.017 STK SIZE, 0.051 ID, 0.085 OD, 0.360 FREE O/A LG, | 11 |
| PIN, CLICK, ELEVATING, AND TRAVERSING MECHANISM: S, CONE PT, BLK OXIDE FIN, 0.154 DIA, 0.312 LG | 12 |
| RING, TRAVERSING MECHANISM CLICK: | 13 |
| NUT, UNION: LOCKING TRAVERSING SCALE | 14 |
| DIAL, SCALE: TRAVERSING MECHANISM | 15 |
| SCREW, TRAVERSING | 16 |
| CHAIN ASSEMBLY, SINGLE LEG: MACHINE GUN FASTENING PIN (ELEV SCREW JOINT PIN) | 20 |
| HOOK, CHAIN: S, 0.106 X 15/16 REACH | 21 |
| CHAIN AND SWIVEL: (FOR ALTERNATE, SEE CHAIN ASSEMBLY, | 22 |
| STOP, UPPER ELEVATING SCREW: | 23 |
| RING, EXTERNALLY THREADED: | 24 |
| SCREW: ELEVATING, LOWER | 25 |
| RING: CLICK, ELEV HANDWHEEL | 26 |
| HANDWHEEL: ELEVATING | 27 |
| POINTER, DIAL: | 28 |
| SCREW: ELEVATING, UPPER | 29 |
| PLATE, SCALE: ELEVATING SCREW, UPPER | 30 |
| SETScrew: S, FIL-HD, NO. 3-48UNC 2 X 3/8, LOCK, ELEVATING HANDWHEEL | 31 |
| PIN, STRAIGHT, HEADLESS: S, 0.128 DIA X 3/32 LG, HANDWHEEL | 32 |
| SPRING, HELICAL, COMPRESSION: S, BLK-OXIDE-FIN, 0.023 STK SIZE, 0.074 ID, 0.120 OD, 0.360 FREE O/A LG, 7-1/2 COILS | 33 |
| PIN, STRAIGHT, HEADLESS: S, PHOS-FIN, 0.125 MAX DIA, 0.190 LG, 1 END CHIN, 1 END SQ | 34 |
| PIN, SPRING, TUBULAR SLOTTED: PHOS-CTD, 3/32 NOM DIA, 9/16 LG | 35 |
| STOP, ELEVATING SCREW: LOWER, ASSY | 36 |
| SLEEVE: ELEVATING MECH | 37 |
| PLUG: SLEEVE, ELEVATING | 38 |
| RIVET, SOLID: EYE-HD, S, 5/16 EYE DIA, 1/4 SHK DIA, 1/2 SHK LG | |
- NOTE. ABOVE RIVET USED FOR ALTERNATE METHOD OF ATTACHING CHAIN ASSEMBLY TO YOKE.

WE 60225

Figure B-18. Traversing and elevating mechanism assembly for Machine Gun Tripod Mount, M2—exploded view.



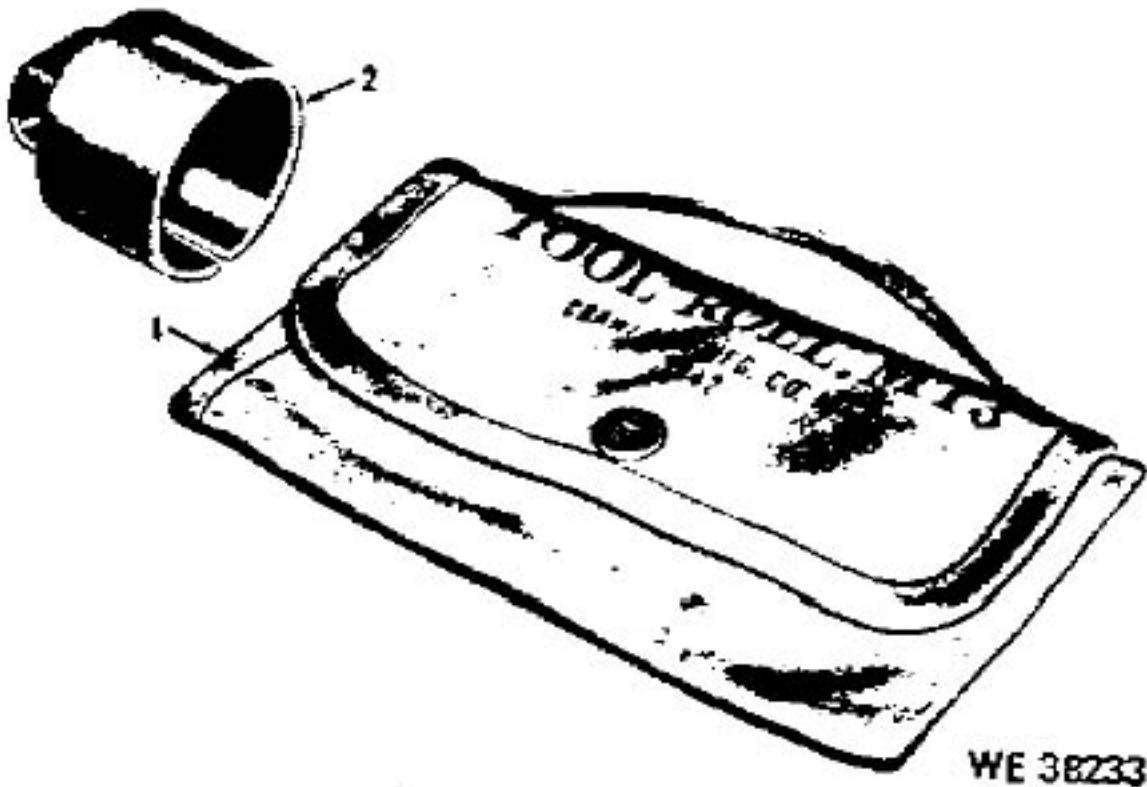
WE 50274

• Figure B-19. Head and leg group Machine Gun Tripod Mount, M2,—exploded view.

HEAD AND LEG GROUPS

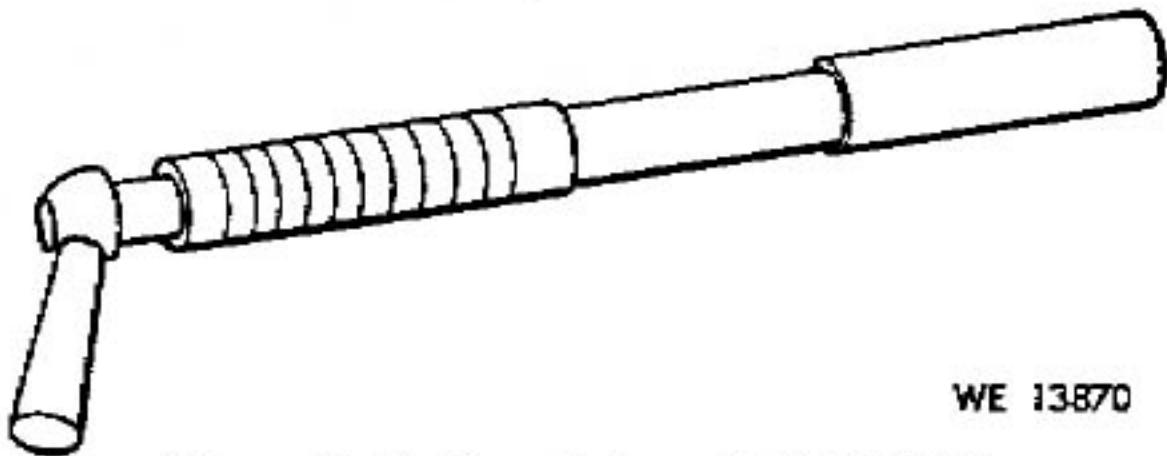
PIN, COTTER: S, PHOS-CTD, 1/8 DIA,
1-1/4 LG
NUT, SLOTTED, HEXAGON: S, PINTLE BOLT
9/16-18NF-2, 25/64 THK
BOLT, MACHINE: S, PHOS-CTD, HEX-HD,
9/16-18UNF-2A, 3-11/32 LG
PINTLE, TRIPOD MOUNT: CAL. .30
NUT, PLAIN, HEXAGON: S, PHOS-CTD,
1/4-28UNF-2B, 7/16 W, 7/32 THK
BOLT, MACHINE: S, HEX-HD, 1/4-28NF-2
X 1, TRAVERSING BAR
BAR ASSEMBLY, TRAVERSING:
NUT, PLAIN, HEXAGON: S, PHOS-CTD,
3/8-24UNF-2B, 9/16 W, 21/64 THK
BOLT, MACHINE: S, HEX-HD, 3/8-24NF-2
X 1-3/4, FRONT LEG
LEG: FRONT
BOLT, MACHINE: S, HEX-HD, 3/8-24NF-2
X 1-2/2, REAR LEG
LEG ASSEMBLY: REAR, RIGHT
PIN, STRAIGHT, HEADLESS: S, SQ-ENDS,
0.184 MIN DIA, 0.186 MAX DIA
LATCH: SLEEVE
SPRING, HELICAL, COMPRESSION: S,
SLEEVE LOCK, 0.06 DIA STK, 0.300 OD, 9 COILS
LEG GROUP:
LEG: REAR LEFT

1	BOLT, MACHINE: S, HEX-HD, 1/4-28NF-2 X 1-3/8, TRIPOD HEAD	18
2	SPACER, SLEEVE: S, TUBING, TRIPOD HEAD, 0.255 ID, 3/8 OD, 0.880 LG	19
3	SCREW, MACHINE: S, HEX-HD, 1/4-28UNF-2A X 1/2, PINTLE LOCK HOUSING	20
4	WASHER, LOCK: S, INT-TEETH, PHOS-CTD, 1/4 SCREW SIZE	21
5	LOCK ASSEMBLY, PINTLE:	22
6	PIN, STRAIGHT, HEADLESS: CHAM, PHOS-CTD, 1/8 X 7/8	23
7	CAM, PINTLE LOCK RELEASE:	24
8	COLLAR, SHAFT: S, 0.327 ID, 1/2 OD 15/32 LG 5141081	25
9	SPRING, HELICAL, COMPRESSION: S, PINTLE LOCK, 0.033 DIA STK, 0.2 OD, 13 COILS	26
10	BODY: PINTLE LOCK	27
11	HOUSING: PINTLE LOCK	28
12	SETScrew: HDLS, FL-PT, CRES, PASS-FIN, NO. 10-32NF-2A X 5/16	29
13	BUSHING, PINTLE:	30
14	HEAD: TRIPOD	31
15	BULK ISSUE ITEMS	
16	WIRE, STEEL CARBON: CORROSION RESISTANT, 0.041 DIA, 5 LB SPOOL	
17		



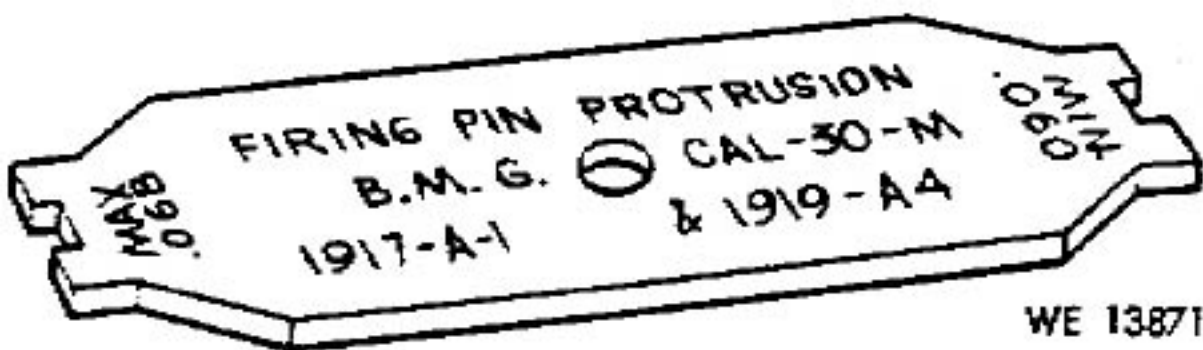
WE 38233

Figure B-20. Roll 6507349 and wrench 6147277 for organizational maintenance.



WE 13870

Figure B-21. Breech bore gage 5564848.



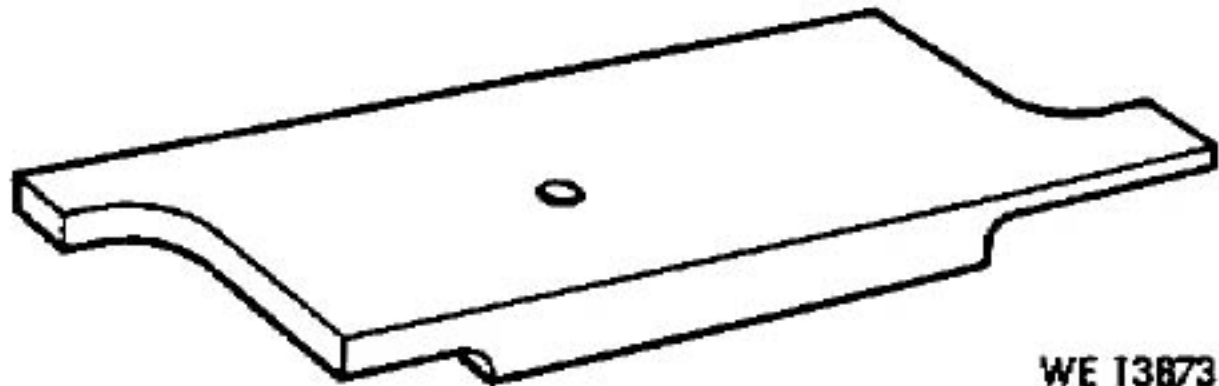
WE 13871

Figure B-22. Firing pin protrusion gage 7319929.



WE 13872

Figure B-23. Plain cylindrical plug gage 507720S.



WE 13873

Figure B-24. Timing gage 7819928.

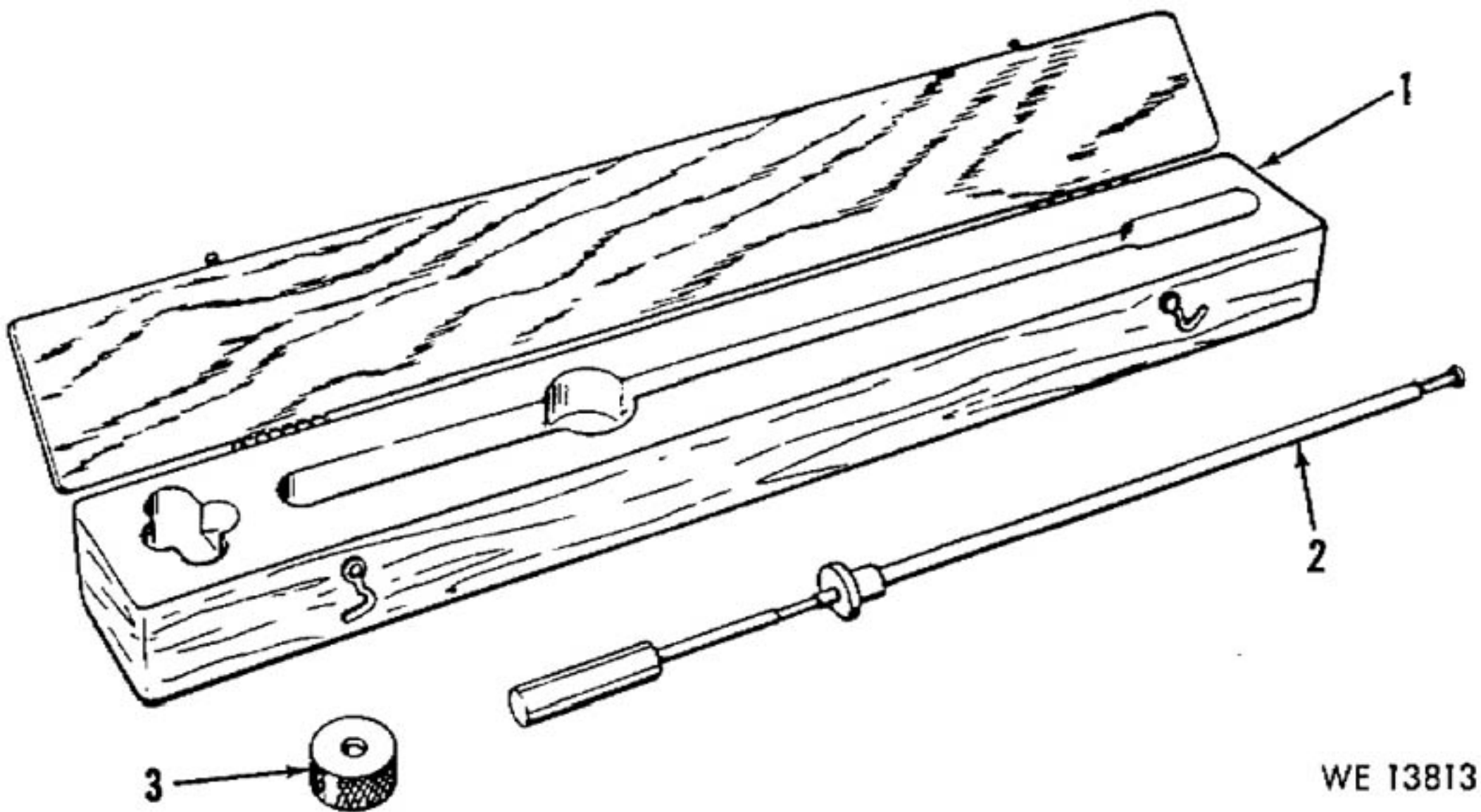
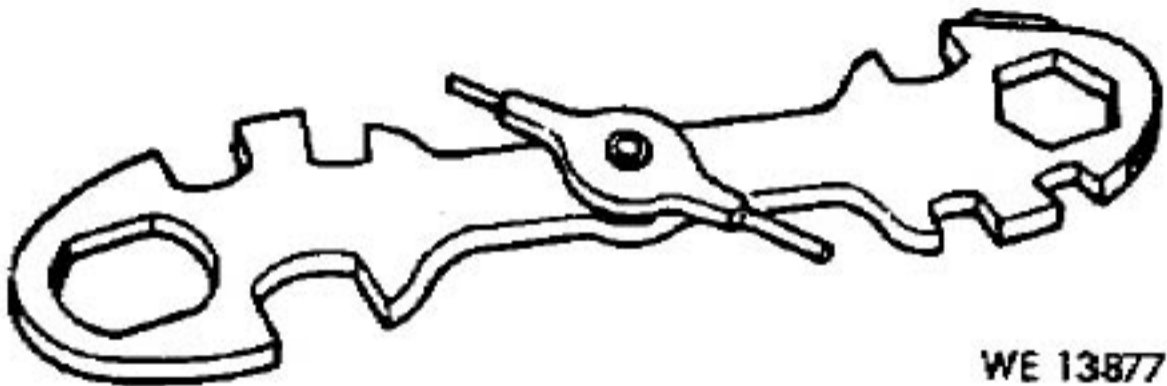


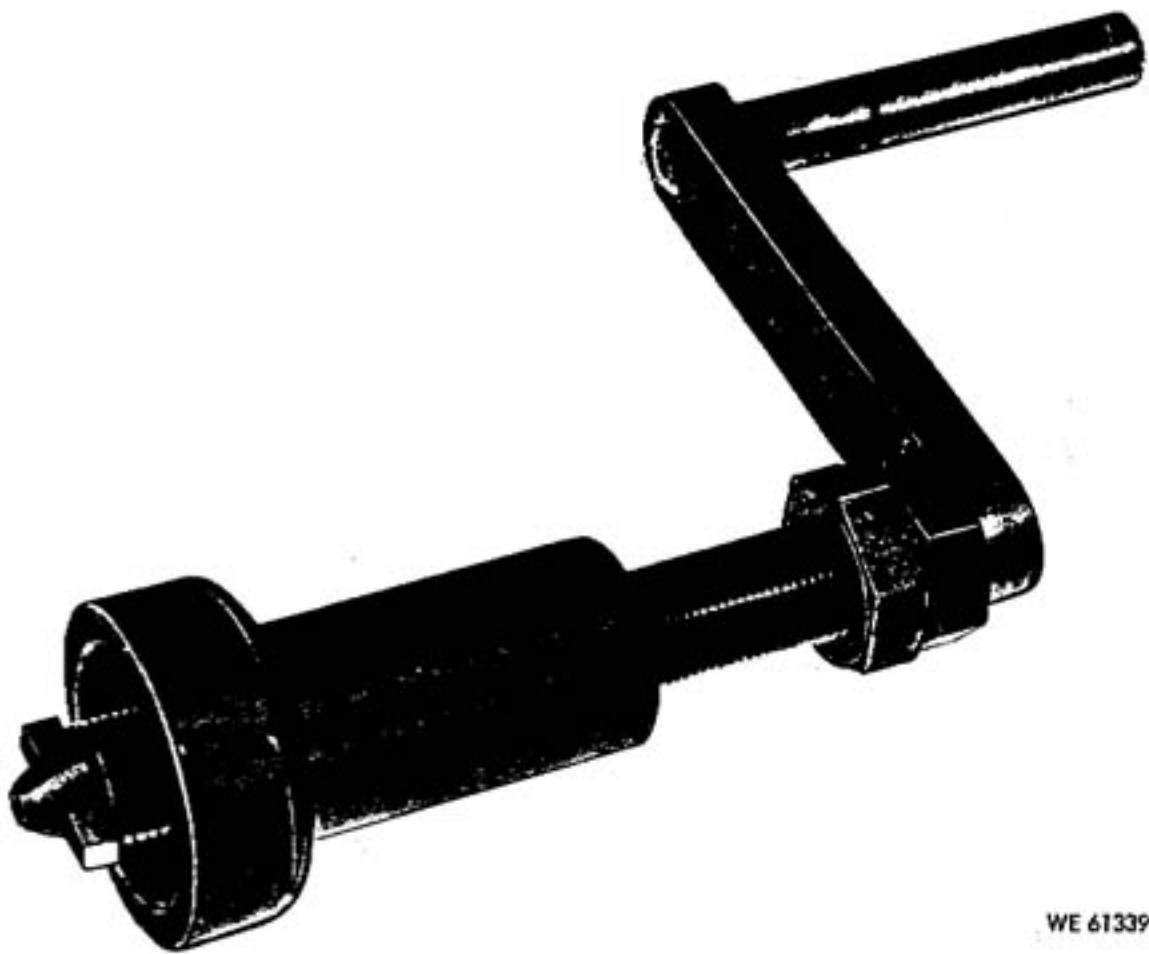
Figure B-25. Barrel erosion gage kit, MS, 5910297.

WE 13813



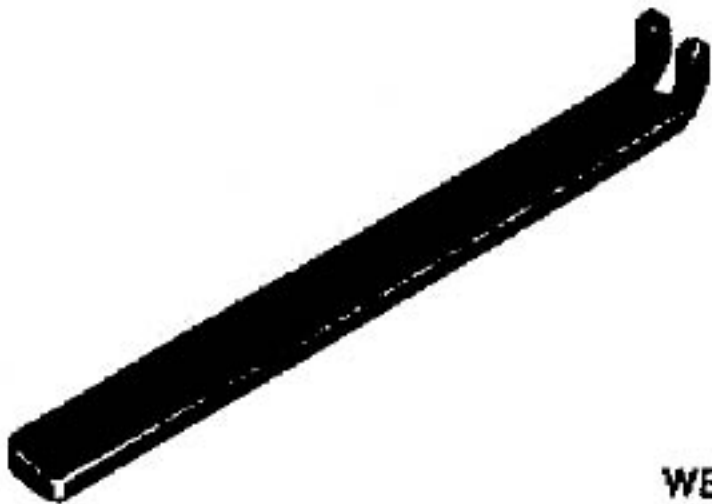
WE 13877

Figure B-27. Combination Wrench, M6, 5568334.



WE 61339

Figure B-26. Carbon removing reamer assembly 7106460.



WE 61335

Figure B-28. Screw stop tool 8436748.